

39747

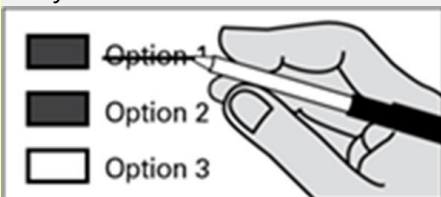
**How to vote**

Use a dark blue or black ink pen to completely fill in the box to the left of your choice. Vote for one in each race. If you vote for more than one, no votes will be counted for that race.



**If you make a mistake**

Draw a line through the entire measure response or candidate's name. Then you may make another choice.



**Optional Write-In**

To vote for a candidate not listed for that race, fill in the box to the left of the dashed line and print the name of the candidate.



**Who donates to campaigns?**

View contributors for candidates and measures  
**Public Disclosure Commission**

www.pdc.wa.gov  
Toll Free (877) 601-2828

Start Voting Next Column ->

**Initiatives to the People**

**Initiative Measure No. 1631**

Initiative Measure No. 1631 concerns pollution. This measure would charge pollution fees on sources of greenhouse gas pollutants and use the revenue to reduce pollution, promote clean energy, and address climate impacts, under oversight of a public board.

Should this measure be enacted into law?

Yes \_\_\_\_\_

No \_\_\_\_\_

**Initiative Measure No. 1634**

Initiative Measure No. 1634 concerns taxation of certain items intended for human consumption. This measure would prohibit new or increased local taxes, fees, or assessments on raw or processed foods or beverages (with exceptions), or ingredients thereof, unless effective by January 15, 2018, or generally applicable.

Should this measure be enacted into law?

Yes \_\_\_\_\_

No \_\_\_\_\_

**Initiative Measure No. 1639**

Initiative Measure No. 1639 concerns firearms. This measure would require increased background checks, training, age limitations, and waiting periods for sales or delivery of semiautomatic assault rifles; criminalize noncompliant storage upon unauthorized use; allow fees; and enact other provisions.

Should this measure be enacted into law?

Yes \_\_\_\_\_

No \_\_\_\_\_

**Initiatives to the Legislature**

**Initiative Measure No. 940**

Initiative Measure No. 940 concerns law enforcement. This measure would require law enforcement to receive violence de-escalation, mental-health, and first-aid training, and provide first-aid; and change standards for use of deadly force, adding a "good faith" standard and independent investigation.

Should this measure be enacted into law?

Yes \_\_\_\_\_

No \_\_\_\_\_

**Advisory Vote**

**Advisory Vote No. 19**

**Engrossed Second Substitute Senate Bill 6269**

The legislature expanded, without a vote of the people, the oil spill response and administration taxes to crude oil or petroleum products received by pipeline, costing \$13,000,000 over ten years for government spending.

This tax increase should be:

Maintained \_\_\_\_\_

Repealed \_\_\_\_\_

**READ: Each candidate for partisan office may state a political party that he or she prefers. A candidate's preference does not imply that the candidate is nominated or endorsed by the party, or that the party approves of or associates with that candidate.**

**Federal: Partisan Offices**

**United States Senator**

Maria Cantwell  
(Prefers Democratic Party) \_\_\_\_\_

Susan Hutchison  
(Prefers Republican Party) \_\_\_\_\_

\_\_\_\_\_  
Write-in: \_\_\_\_\_

**Congressional District 4 U.S. Representative**

Dan Newhouse  
(Prefers Republican Party) \_\_\_\_\_

Christine Brown  
(Prefers Democratic Party) \_\_\_\_\_

\_\_\_\_\_  
Write-in: \_\_\_\_\_

**Continue Voting Other Side --->**

39747

**Legislative:  
Partisan Offices**

**Legislative District 12  
State Representative Pos. 1**

Keith Goehner  
(Prefers Republican Party)

Ann Diamond  
(States No Party Preference)

Write-in: \_\_\_\_\_

**Legislative District 12  
State Representative Pos. 2**

Mike Steele  
(Prefers Republican Party)

Valerie Sarratt  
(Prefers Democratic Party)

Write-in: \_\_\_\_\_

**County: Partisan Offices**

**Douglas County Assessor**

Jim Ruud  
(Prefers Republican Party)

Write-in: \_\_\_\_\_

**Douglas County Auditor**

Thad Duvall  
(Prefers Democratic Party)

Write-in: \_\_\_\_\_

**Douglas County Clerk**

Tristen Worthen  
(Prefers Republican Party)

Write-in: \_\_\_\_\_

**Douglas County Commissioner 3**

Marc Straub  
(Prefers Republican Party)

Norman (Buck) Tupling  
(Prefers Republican Party)

Write-in: \_\_\_\_\_

**Douglas County Prosecuting  
Attorney**

Gordon Edgar  
(States No Party Preference)

Write-in: \_\_\_\_\_

**Douglas County Sheriff**

Short/Full Year Term

Kevin W. Morris  
(Prefers Republican Party)

Leeon Leyde  
(Prefers Republican Party)

Write-in: \_\_\_\_\_

**Douglas County Treasurer**

Natalie R. Marx  
(Prefers Republican Party)

Write-in: \_\_\_\_\_

**Public Utility District:  
Nonpartisan Office**

**Public Utility District**

Commissioner #1

Ron Skagen

Write-in: \_\_\_\_\_

**Judicial  
Nonpartisan Offices**

**Supreme Court Justice Position 2**

Susan Owens

Write-in: \_\_\_\_\_

**Supreme Court Justice Position 8**

Nathan Choi

Steve Gonzalez

Write-in: \_\_\_\_\_

**Supreme Court Justice Position 9**

Sheryl Gordon McCloud

Write-in: \_\_\_\_\_

**Court of Appeals Division 3  
District 3 Judge Position 2**

Rob Lawrence-Berrey

Write-in: \_\_\_\_\_

**Douglas County  
District Court Judge**

Short/Full Term

Eric C. Biggar

Robert Hunter

Write-in: \_\_\_\_\_

**Fire District**

**Douglas County  
Fire Protection District No.4**

Proposition 1

**Increase In Regular Property Tax  
Levy Rate For Fire and Emergency  
Services**

The Board of Commissioners of Douglas County Fire Protection District No. 4 has adopted Resolution No. 18-01 containing a proposition to fund fire and emergency services. This proposition would increase the District's regular property tax levy rate for collection in 2019, 2020 and 2021 to \$0.97 per \$1,000 of assessed valuation and the 2021 levy rate would be used as the base rate for computing limitations upon future levy increases, all as provided in Resolution 18-01.

Should this proposition be approved?

Yes

No

**Cemetery District**

**Douglas County  
Cemetery District No.2**

Proposition 1

**One Year Maintenance And  
Operations Excess Tax Levy**

The Douglas County Cemetery District No. 2 Board of Commissioners adopted Resolution #2018/001 on August 6, 2018, containing a proposition to finance maintenance and operations. This proposition would authorize the district to levy excess taxes upon all taxable property within the district in the amount of \$50,000, requiring collection of approximately \$0.29 per \$1,000 of assessed valuation in 2019.

Should this proposition be approved?

Yes

No