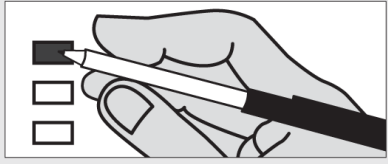


64406

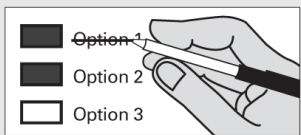
## Instructions

### How to vote



Use a dark blue or black ink pen to completely fill in the box to the left of your choice. Vote for one in each race. If you vote for more than one, no votes will be counted for that race.

### If you make a mistake



Draw a line through the entire measure response or candidate's name. Then you may make another choice.

### Optional write-in



To vote for a candidate not listed for that race, fill in the box to the left of the dashed line and print the name of the candidate.

**Start voting here**

**Who donates to campaigns?**  
View contributors for candidates and measures  
**Public Disclosure Commission**  
www.pdc.wa.gov  
Toll Free (877) 601-2828

## Advisory Votes

### Advisory Vote No. 16

Engrossed Substitute House Bill 1597  
The legislature increased, without a vote of the people, the food fish excise tax rate on certain salmon and game fish, costing less than \$1,000,000 in the first ten years, for government spending.

This tax increase should be:  
 Repealed  
 Maintained

### Advisory Vote No. 17

Engrossed House Bill 2163  
The legislature expanded, without a vote of the people, the business and occupation tax and narrowed certain retail sales and use tax exemptions, costing \$565,000,000 in the first ten years, for government spending.

This tax increase should be:  
 Repealed  
 Maintained

### Advisory Vote No. 18

Engrossed House Bill 2242  
The legislature imposed, without a vote of the people, an additional state property tax for common schools, costing \$12,949,000,000 in the first ten years, for government spending.

This tax increase should be:  
 Repealed  
 Maintained

## County: Non-Partisan Offices

### Port Countywide

Commissioner District 3  
 Mark M. Spurgeon  
  
Write-in: \_\_\_\_\_

### Park and Recreation District

#### Eastmont Metro Park

Commissioner #3  
 David Allen  
  
Write-in: \_\_\_\_\_

#### Eastmont Metro Park

Commissioner #5  
4-Year Unexpired Term  
 Lauren J. Miede  
 Brandon Mauseth  
  
Write-in: \_\_\_\_\_

## Water District

### East Wenatchee Water

Water Commissioner #1  
 Nick Warner  
 John D. Sterk  
  
Write-in: \_\_\_\_\_

## Hospital Districts

### Hospital District #1

Commissioner Pos. 1 At Large  
 Vicki Orford  
  
Write-in: \_\_\_\_\_

### Hospital District #1

Commissioner Pos. 5 At Large  
 Tracy Shrable  
  
Write-in: \_\_\_\_\_

### Hospital District #2

Commissioner #2  
4-Year Unexpired Term  
 Jeremy Weber  
  
Write-in: \_\_\_\_\_

### Hospital District #6

Hospital Commissioner #3  
 Jerry Kennedy  
  
Write-in: \_\_\_\_\_

### Hospital District #6

Hospital Commissioner #4  
 Geary Oliver  
  
Write-in: \_\_\_\_\_

## School Districts

### Brewster School District 111-203J

Director District 3  
 Maria A. Maldonado  
 Clark Cooper  
  
Write-in: \_\_\_\_\_

### Brewster School District 111-203J

Director District 5 At Large  
 Mario Camacho  
  
Write-in: \_\_\_\_\_

### Bridgeport School District #75

Director #2 @ Large  
 Maggie Ochoa  
  
Write-in: \_\_\_\_\_

### Bridgeport School District #75

Director #5  
 Tracy Zahn  
  
Write-in: \_\_\_\_\_

### Coulee Hartline School District #151

School Director #1  
 Karin Whitaker  
  
Write-in: \_\_\_\_\_

### Coulee Hartline School District #151

School Director #3  
 Christina Jalali  
  
Write-in: \_\_\_\_\_

### Coulee Hartline School District #151

School Director 5 at Large  
 William H Murray  
  
Write-in: \_\_\_\_\_

### Eastmont School District #206

Director #3  
 Annette Eggers  
  
Write-in: \_\_\_\_\_

### Eastmont School District #206

Director #4 @ Large  
 Dave Piepel  
 John M. Brangwin  
  
Write-in: \_\_\_\_\_

### Ephrata School District #165

School Director #5  
 Alan Key  
  
Write-in: \_\_\_\_\_

### Grand Coulee School District #301

School Director #1  
 Tammy James-Pino  
 Carla B. Marconi  
  
Write-in: \_\_\_\_\_

### Grand Coulee School District #301

School Director #2  
 Kenneth W. Stanger  
  
Write-in: \_\_\_\_\_

### Grand Coulee School District #301

School Director At Large #3  
2-Year Unexpired Term  
 George LaPlace  
  
Write-in: \_\_\_\_\_

# Sample Ballot

**School Districts**

**Grand Coulee School District #301**

School Director #5

Kelly N Steffens

Richard Black

Write-in: \_\_\_\_\_

---

**Lake Chelan School District No. 129**

School Board Member  
Director District #1

Lynda Foster

Write-in: \_\_\_\_\_

---

**Lake Chelan School District No. 129**

School Board Member  
Director District #3

David Rinehart

Ken Brunner

Write-in: \_\_\_\_\_

---

**Mansfield School District #207**

Director #1

Tara Tupling

Write-in: \_\_\_\_\_

---

**Mansfield School District #207**

Director #2

Cory Moore

Write-in: \_\_\_\_\_

---

**Mansfield School District #207**

Director #5

Brad Murison

Write-in: \_\_\_\_\_

---

**Orondo School District #13**

Director #1

Chelsie Miller

Write-in: \_\_\_\_\_

---

**Orondo School District #13**

Director #2

Jan Merriman

Write-in: \_\_\_\_\_

**Palisades School District #102**

Director #1

Sarah Hale

Write-in: \_\_\_\_\_

---

**Palisades School District #102**

Director #5

Cherylan Backman

Write-in: \_\_\_\_\_

---

**Quincy School District #144**

School Director #1

Tricia C. Lubach

Write-in: \_\_\_\_\_

---

**Quincy School District #144**

School Director 5 At Large

Alex Ybarra

Write-in: \_\_\_\_\_

---

**Waterville School District #209**

Director #1  
2-Year Unexpired Term

Seth A. Normington

Write-in: \_\_\_\_\_

---

**Waterville School District #209**

Director #3

Joel Harding

Write-in: \_\_\_\_\_

---

**Waterville School District #209**

Director #4

Amanda M. Viebrock

Write-in: \_\_\_\_\_

---

**Local Offices**

**City of Bridgeport**

Council Position 1

Matthew Schuh

Write-in: \_\_\_\_\_

---

**City of Bridgeport**

Council Position 3

Jacqueline (Jackie) Hentges

Write-in: \_\_\_\_\_

**Town of Coulee Dam**

Mayor

Gayle Swagerty

Larry Price

Write-in: \_\_\_\_\_

---

**Town of Coulee Dam**

Council Pos. 1

David Schmidt

Fred Netzel

Write-in: \_\_\_\_\_

---

**Town of Coulee Dam**

Council Pos. 2

Bob Poch

Write-in: \_\_\_\_\_

---

**Town of Coulee Dam**

Council Pos. 3

Timothy Brooks

Marcia Warnecke

Bruce Bartoo

Write-in: \_\_\_\_\_

---

**City of East Wenatchee**

Council Position 3

Morgan Fletcher

Chuck Johnson

Write-in: \_\_\_\_\_

---

**City of East Wenatchee**

Council Position 4

Jerrilea Crawford

Write-in: \_\_\_\_\_

---

**City of East Wenatchee**

Council Position 7

Matthew Hepner

Write-in: \_\_\_\_\_

---

**Town of Mansfield**

Council Position 2

Adam Foged

Write-in: \_\_\_\_\_

**Town of Mansfield**

Council Position 4

Gerald Poole

Write-in: \_\_\_\_\_

---

**City of Rock Island**

Council Position 1  
2-Year Unexpired Term

Ray Pearson

Cameron Marchmonte

Write-in: \_\_\_\_\_

---

**City of Rock Island**

Council Position 2

Jessica Ochoa

Write-in: \_\_\_\_\_

---

**City of Rock Island**

Council Position 3

Brad Hampton

Write-in: \_\_\_\_\_

---

**City of Rock Island**

Council Position 4

Mariah Monesmith Kreider

Jana C Howard

Write-in: \_\_\_\_\_

---

**City of Rock Island**

Council Position 5  
2-Year Unexpired Term

Carmen Andonaegui

Write-in: \_\_\_\_\_

---

**Town of Waterville**

Council Position 1

Jenna Dixon

Write-in: \_\_\_\_\_

---

**Town of Waterville**

Council Position 2

Loyd C. Smith

Write-in: \_\_\_\_\_

64406

## Fire Districts

### Fire District #1

Commissioner #3  
2-Year Unexpired Term

Gary Mullendore

Write-in:

### Fire District #2

Commissioner #1

Richard W. McBride

Write-in:

### Fire District #4

Commissioner #1

Pat Brandt

Write-in:

### Fire District #5

Commissioner #1

Monty H. Black

Write-in:

### Fire District #8

Commissioner #1

Tim Behne

Write-in:

### Douglas - Okanogan Fire District 15

Commissioner Pos. 1

Ivan (Ike) Vallance

Write-in:

### Douglas - Okanogan Fire District 15

Commissioner Pos. 5

F. Eric Zahn

Write-in:

## Cemetery District

### Cemetery District #2

Commissioner #1

Sandra J Stoddard

Write-in:

## Sewer District

### Sewer District #1

Sewer Commissioner #1

Wayne "Barney" Barnhart

Write-in:

**This page intentionally left blank**