

Vote Both Sides

Special Election
 Sample Ballot
 Douglas County, Washington
 February 10, 2015

Precinct *Countywide*

Instructions

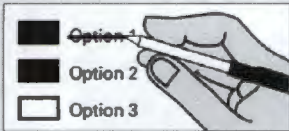
How to vote



Use a dark blue or black ink pen to completely fill in the box to the left of your choice.

Vote for one in each race. If you vote for more than one, no votes will be counted for that race.

If you make a mistake



Draw a line through the entire measure response or candidate's name. Then you may make another choice.

↓ Start voting here

i Who donates to campaigns?
 View contributors for candidates and measures

Public Disclosure Commission

www.pdc.wa.gov
 Toll Free (877) 601-2828

School District

Bridgeport School District No. 75
 Proposition 1
 TWO YEAR CAPITAL LEVY

The Board of Directors of Bridgeport School District No. 75 adopted Resolution No. 432 concerning a proposition to finance capital acquisitions and improvements. This proposition would authorize the District to levy the following excess taxes upon all taxable property within the District to fund capital acquisitions and improvements at Bridgeport Elementary School (including acquiring and installing portable (modular) classrooms and making roof repairs):

Collection Year	Assessed Value	Levy Amount
2016	\$1.55	\$203,904
2017	\$1.55	\$205,943

all as provided in Resolution No. 432. Should this proposition be approved?

- Levy Yes
 Levy No

Quincy School Dist No. 144-101
 Proposition No 1
 REPLACEMENT MAINTENANCE AND OPERATION LEVY

The Board of Directors of Quincy School District No. 144-101 adopted Resolution No. 02-15, concerning a proposition to finance maintenance and operation expenses. This proposition would authorize the District to meet the educational needs of its students by levying the following excess taxes, in place of an expiring levy, on all taxable property within the District, for support of the District's General Fund educational maintenance and operation expenses:

Collection Year	Assessed Value	Levy Amount
2016	\$3.05	\$7,742,599
2017	\$2.91	\$7,974,877
2018	\$2.77	\$8,214,123

12000010100011

Sample Ballot

000000001102

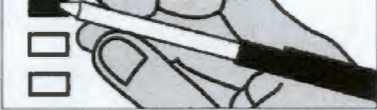
Sample Ballot

1193031131

12000010100011

Sample Ballot

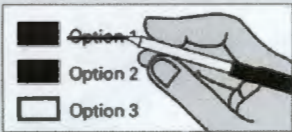
000000001102



Use a dark blue or black ink pen to completely fill in the box to the left of your choice.

Vote for one in each race. If you vote for more than one, no votes will be counted for that race.

If you make a mistake



Draw a line through the entire measure response or candidate's name. Then you may make another choice.

Start voting here



Who donates to campaigns?

View contributors for candidates and measures

Public Disclosure Commission

www.pdc.wa.gov
Toll Free (877) 601-2828

The Board of Directors of Bridgeport School District No. 75 adopted Resolution No. 432 concerning a proposition to finance capital acquisitions and improvements. This proposition would authorize the District to levy the following excess taxes upon all taxable property within the District to fund capital acquisitions and improvements at Bridgeport Elementary School (including acquiring and installing portable (modular) classrooms and making roof repairs):

Collection Year	Approximate Levy Rate Per \$1000	
	Assessed Value	Levy Amount
2016	\$1.55	\$203,904
2017	\$1.55	\$205,943

all as provided in Resolution No. 432. Should this proposition be approved?

- Levy Yes
- Levy No

**Quincy School Dist No. 144-101
Proposition No 1
REPLACEMENT MAINTENANCE AND OPERATION
LEVY**

The Board of Directors of Quincy School District No. 144-101 adopted Resolution No. 02-15, concerning a proposition to finance maintenance and operation expenses. This proposition would authorize the District to meet the educational needs of its students by levying the following excess taxes, in place of an expiring levy, on all taxable property within the District, for support of the District's General Fund educational maintenance and operation expenses:

Collection Year	Approximate Levy Rate Per \$1000	
	Assessed Value	Levy Amount
2016	\$3.05	\$7,742,599
2017	\$2.91	\$7,974,877
2018	\$2.77	\$8,214,123
2019	\$2.65	\$8,460,547

all as provided in Resolution No.02-15. Should this proposition be approved?

- Levy Yes
- Levy No

Sample Ballot

1193031131

Vote Both Sides

Special Election
 Sample Ballot
 Douglas County, Washington
 February 10, 2015

Precinct *Countywide*

EPHRATA SCHOOL DIST. # 165/55J
 PROPOSITION NO. 1
 REPLACEMENT MAINTENANCE AND OPERATION
 LEVY

The Board of Directors of Ephrata School District No. 165/55J adopted Resolution 2014-15-6, concerning a proposition to finance maintenance and operation expenses. This proposition would authorize the District to levy the following excess taxes, in place of an expiring levy, upon all taxable property within the District, for support of the District's educational, maintenance and operation expenses:

Levy Collection Year	Approximate Levy	
	Assessed Value	Rate Per \$1000
2016	\$5.08	\$3,775,000
2017	\$5.08	\$3,850,500
2018	\$5.08	\$3,927,510
2019	\$5.08	\$4,006,060

all as provided in Resolution No.2014-15-6. Should this proposition be approved?

- Levy Yes
 Levy No

GRAND COULEE DAM SCHOOL DISTRICT NO.301J
 PROPOSITION NO. 1
 REPLACEMENT MAINTENANCE AND OPERATION
 LEVY

To meet the educational need of students in the Grand Coulee Dam School District No. 301J, shall the Grand Coulee Dam School District No. 301J levy the following excess taxes for the purpose of replacing an expiring levy, for General Fund essential education expenses, maintenance and operation expenses on all taxable property within the district?

Collection Year	Approximate Levy	
	Assessed Value	Rate Per \$1000
2016	\$3.95	\$1,130,000
2017	\$3.95	\$1,130,000
2018	\$3.95	\$1,130,000
2019	\$3.95	\$1,130,000

12000010200018

Sample Ballot

000000001205

Sample Ballot

1193031131

12000010200018

Sample Ballot

000000001205



proposition to finance maintenance and operation expenses. This proposition would authorize the District to levy the following excess taxes, in place of an expiring levy, upon all taxable property within the District, for support of the District's educational, maintenance and operation expenses:

Levy Collection Year	Approximate Levy	
	Assessed Value	Levy Amount
2016	\$5.08	\$3,775,000
2017	\$5.08	\$3,850,500
2018	\$5.08	\$3,927,510
2019	\$5.08	\$4,006,060

all as provided in Resolution No.2014-15-6. Should this proposition be approved?

Levy Yes

Levy No

**GRAND COULEE DAM SCHOOL DISTRICT NO.301J
PROPOSITION NO. 1
REPLACEMENT MAINTENANCE AND OPERATION
LEVY**

To meet the educational need of students in the Grand Coulee Dam School District No. 301J, shall the Grand Coulee Dam School District No. 301J levy the following excess taxes for the purpose of replacing an expiring levy, for General Fund essential education expenses, maintenance and operation expenses on all taxable property within the district?

Collection Year	Approximate Levy	
	Assessed Value	Levy Amount
2016	\$3.95	\$1,130,000
2017	\$3.95	\$1,130,000
2018	\$3.95	\$1,130,000
2019	\$3.95	\$1,130,000

all as specified in District Resolution No. 14/15-03.

Levy Yes

Levy No

Sample Ballot

1193031131



Vote Both Sides