

12000010100011

Sample Ballot

000000021120



Instructions

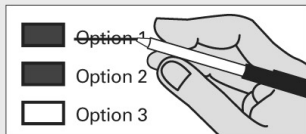
How to vote



Use a dark blue or black ink pen to completely fill in the box to the left of your choice.

Vote for one in each race. If you vote for more than one, no votes will be counted for that race.

If you make a mistake



Draw a line through the entire measure response or candidate's name. Then you may make another choice.

School Districts

**Orondo School District No. 13
 Proposition No.1**

TWO-YEAR REPLACEMENT MAINTENANCE AND OPERATION LEVY

The Board of Directors of Orondo School District No. 13 adopted Resolution No. 11-3 concerning a proposition to finance District maintenance and operation expenses. This proposition would authorize the District to levy the following excess taxes, in place of an expiring levy, upon all taxable property within the District to support the District's General Fund maintenance and operation expenses:

Levy Collection Year	Assessed Value	Estimated Levy Rate Per \$1,000	Total
2013	\$773,900	\$2.40	
2014	\$801,270	\$2.49	

all as provided in Resolution No. 11-3. Should this proposition be approved?

Levy Yes

Levy No

**Bridgeport School District No. 75J
 Proposition No.1**

REPLACEMENT SCHOOL MAINTENANCE AND OPERATION LEVY

The Board of Directors of Bridgeport School District No. 75 adopted Resolution No. 410 concerning a proposition to finance maintenance and operation expenses. This proposition would authorize the District to levy the following excess taxes, in place of an expiring levy, on all taxable property within the District, for support of the District's General Fund educational maintenance and operations:

Collection Year	Assessed Value	Approximate Levy Rate Per \$1,000	Levy
2013	\$210,000	\$1.75	
2014	\$210,000	\$1.75	
2015	\$210,000	\$1.75	
2016	\$210,000	\$1.75	

all as provided in Resolution No. 410. Should this proposition be approved?

Levy Yes

Levy No

**Mansfield School District No. 207
 Proposition No.1**

FOUR YEAR SCHOOL MAINTENANCE AND OPERATION LEVY

The Board of Directors of Mansfield School District No. 207 adopted Resolution No. 1107 concerning a proposition to finance District maintenance and operation. This proposition would authorize the District to levy the following excess taxes upon all taxable property within the District, upon expiration of the current maintenance and operation levy, to support General Fund maintenance and operations:

Levy/Collection Value	Total Levy/Collection Years	Estimated Levy Rate Per Assessed
2012/2013	\$2.24	\$125,000
2013/2014	\$2.24	\$125,000
2014/2015	\$2.24	\$125,000
2015/2016	\$2.24	\$125,000

all as provided in Resolution No. 1107. Should this proposition be approved?

Levy Yes

Levy No

Sample Ballot

0903031104



12000010200018

Sample Ballot

000000021223

Waterville School District No. 209 Proposition No. 1

TWO-YEAR REPLACEMENT MAINTENANCE AND OPERATION LEVY
The Board of Directors of Waterville School District No. 209 adopted Resolution No. 2011/2012-004 concerning a proposition to finance District maintenance and operation expenses. This proposition would authorize the District to levy the following excess taxes, in place of an expiring levy, upon all taxable property within the District to support the District's General Fund maintenance and operation expenses:

Levy Collection Year	Assessed Value	Estimated Levy Rate Per \$1,000	Total
2013	\$846,740	\$5.47	
2014	\$846,740	\$5.47	

all as provided in Resolution No. 2011/2012-004. Should this proposition be approved?

Levy Yes

Levy No

Waterville School District No. 209 Proposition No. 2

THREE-YEAR CAPITAL PROJECTS LEVY
The Board of Directors of Waterville School District No. 209 adopted Resolution No. 2011/2012-005 concerning a proposition to finance capital improvements to the District's school facilities. This proposition would authorize the District to levy the following excess taxes upon all taxable property within the District to support construction, modernization and remodeling of school facilities:

Levy Collection Year	Assessed Value	Estimated Levy Rate Per \$1,000	Total
2013	\$166,667	\$1.08	
2014	\$166,667	\$1.08	
2015	\$166,667	\$1.08	

all as provided in Resolution No. 2011/2012-005. Should this proposition be approved?

Levy Yes

Levy No

Palisades School District No. 102 Proposition No. 1

TWO-YEAR REPLACEMENT MAINTENANCE AND OPERATION LEVY
The Board of Directors of Palisades School District No. 102 adopted Resolution No. 2011-02 concerning a proposition to finance District maintenance and operation expenses. This proposition would authorize the District to levy the following excess taxes, in place of an expiring levy, upon all taxable property within the District to support the District's General Fund maintenance and operation expenses:

Levy Collection Years	Assessed Value	Approximate Levy Rate Per \$1,000	Total
2013	\$95,115	\$1.96	
2014	\$97,017	\$1.96	

all as provided in Resolution No. 2011-02. Should this proposition be approved?

Levy Yes

Levy No

Brewster School District No. 111/203J Proposition 1

REPLACEMENT MAINTENANCE AND OPERATION LEVY
The Board of Directors of Brewster School District adopted Resolution No. 03-11/12 concerning a proposition to finance maintenance and operation expenses. This proposition would authorize the District to levy the following taxes on all taxable property for the purpose of replacing an expired levy for support of the General Fund educational maintenance and operation expenses:

Collection Year	Assessed Value	Approximate Rate per \$1000	Levy
2013	\$975,494	\$3.12	
2014	\$975,494	\$3.12	

All as specified in District Resolution No. 03-11/12. Should this proposition be approved?

LEVY YES

LEVY NO

Coulee-Hartline School District No. 151-204J Proposition No. 1

REAPPORTIONMENT OF DIRECTOR DISTRICTS TO FOUR DIRECTOR DISTRICTS AND ONE POSITION AT-LARGE
Shall Coulee-Hartline School District No. 151, Grant and Douglas Counties, be authorized to redistrict its school director districts from five districts to four districts and one at-large position based on population from the most recent federal decennial census and to better facilitate citizen participation as board members?

All as provided in Resolution No. 1-11-12. Should this proposition be approved?

Yes

No

Coulee-Hartline School District No. 151-204J Proposition No. 2

REPLACEMENT MAINTENANCE AND OPERATION LEVY
The Board of Directors of Coulee-Hartline School District No. 151 adopted Resolution No. 2-11-12, concerning a proposition to finance maintenance and operation expenses. This proposition would authorize the district to levy the following excess taxes, in place of an expiring levy, upon all taxable property within the district, for support of the district's General Fund educational maintenance and operation expenses:

Levy/Collection Years	Assessed Value	Approximate Levy Rate per \$1,000
2012-13	\$493,131	\$2.55
2013-14	\$493,131	\$2.55

All as provided in Resolution No. 2-11-12. Should this proposition be approved?

Levy Yes

Levy No

Sample Ballot

0903031104