

12000010100011

Sample Ballot

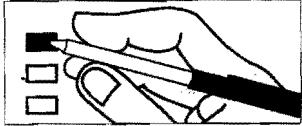
400000005122

Sample Ballot

1353031176

Instructions

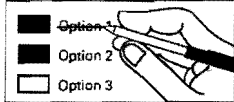
How to vote



Use a dark blue or black ink pen to completely fill in the box to the left of your choice.

Vote for one in each race. If you vote for more than one, no votes will be counted for that race.

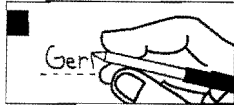
If you make a mistake



Draw a line through the entire measure response or candidate's name.

Then you may make another choice.

Optional write-in



To vote for a candidate not listed for that race, fill in the box to the left of the dashed line and print the name of the candidate.

State Measures

**Proposed by Initiative Petition
Initiative Measure No. 1185**

Initiative Measure No. 1185 concerns tax and fee increases imposed by state government. This measure would restate existing statutory requirements that legislative actions raising taxes must be approved by two-thirds legislative majorities or receive voter approval, and that new or increased fees require majority legislative approval. Should this measure be enacted into law?

- Yes
- No

**Proposed by Initiative Petition
Initiative Measure No. 1240**

Initiative Measure No. 1240 concerns creation of a public charter school system. This measure would authorize up to forty publicly-funded charter schools open to all students, operated through approved, nonreligious, nonprofit organizations, with government oversight; and modify certain laws applicable to them as public schools. Should this measure be enacted into law?

- Yes
- No

**Passed by the Legislature and
Ordered Referred by Petition
Referendum Measure No. 74**

The legislature passed Engrossed Substitute Senate Bill 6239 concerning marriage for same-sex couples, modified domestic-partnership law, and religious freedom, and voters have filed a sufficient referendum petition on this bill. This bill would allow same-sex couples to marry, preserve domestic partnerships only for seniors, and preserve the right of clergy or religious organizations to refuse to perform, recognize, or accommodate any marriage ceremony. Should this bill be:

- Approved
- Rejected

**Proposed to the Legislature and
Referred to the People
Initiative Measure No. 502**

Initiative Measure No. 502 concerns marijuana. This measure would license and regulate marijuana production, distribution, and possession for persons over twenty-one; remove state-law criminal and civil penalties for activities that it authorizes; tax marijuana sales; and earmark marijuana-related revenues. Should this measure be enacted into law?

- Yes
- No

**Proposed to the People by the
Legislature
Amendment to the State Constitution
Engrossed Senate Joint Resolution No. 8221**

The Legislature has proposed a constitutional amendment on implementing the Commission on State Debt recommendations regarding Washington's debt limit. This amendment would, starting July 1, 2014, phase-down the debt limit percentage in three steps from nine to eight percent and modify the calculation date, calculation period, and the term general state revenues. Should this constitutional amendment be:

- Approved
- Rejected

**Proposed to the People by the
Legislature
Amendment to the State Constitution
Senate Joint Resolution No. 8223**

The Legislature has proposed a constitutional amendment on investments by the University of Washington and Washington State University. This amendment would create an exception to constitutional restrictions on investing public funds by allowing these universities to invest specified public funds as authorized by the legislature, including in private companies or stock. Should this constitutional amendment be:

- Approved
- Rejected

**Advisory Vote of the People
Advisory Vote No. 1
Engrossed Senate Bill 6635**

The legislature eliminated, without a vote of the people, a business and occupation tax deduction for certain financial institutions' interest on residential loans, costing \$170,000,000, in its first ten years, for government spending. This tax increase should be:

- Repealed
- Maintained

**Advisory Vote of the People
Advisory Vote No. 2
Substitute House Bill 2590**

The legislature extended, without a vote of the people, expiration of a tax on possession of petroleum products and reduced the tax rate, costing \$24,000,000, in its first ten years, for government spending. This tax increase should be:

- Repealed
- Maintained

Federal: Partisan Offices

President/Vice President

Barack Obama / Joe Biden
Democratic Party Nominees

Mitt Romney / Paul Ryan
Republican Party Nominees

Gary Johnson / James P. Gray
Libertarian Party Nominees

Virgil Goode / James N. Clymer
Constitution Party Nominees

Jill Stein / Cheri Honkala
Green Party Nominees

Peta Lindsay / Yari Osorio
Socialism & Liberation Party Nominees

James Harris / Alyson Kennedy
Socialist Workers Party Nominees

Ross C. (Rocky) Anderson / Luis J. Rodriguez
Justice Party Nominees

Write-in

READ: Each candidate for President and Vice President is the official nominee of a political party. For other partisan offices, each candidate may state a political party that he or she prefers. A candidate's preference does not imply that the candidate is nominated or endorsed by the party, or that the party approves of or associates with that candidate

U.S. Senator

Maria Cantwell ✓

(Prefers Democratic Party)

Michael Baumgartner

(Prefers Republican Party)

Write-in

**Congressional District 4
U.S. Representative**

Doc Hastings

(Prefers Republican Party)

Mary Baechler

(Prefers Democratic Party)

Write-in

**Congressional District 8
U.S. Representative**

Dave Reichert

(Prefers Republican Party)

Karen Porterfield

(Prefers Democratic Party)

Write-in

State: Partisan Offices

Governor

Jay Inslee

(Prefers Democratic Party)

Rob McKenna

(Prefers Republican Party)

Write-in

Lt. Governor

Brad Owen

(Prefers Democrat Party)

Bill Finkbeiner

(Prefers Republican Party)

Write-in

12000010200018

Sample Ballot

400000005219

Secretary of State

Kim Wyman
(Prefers Republican Party)

Kathleen Drew
(Prefers Democratic Party)

Write-in

State Treasurer

Jim McIntire
(Prefers Democratic Party)

Sharon Hanek
(Prefers Republican Party)

Write-in

State Auditor

James Watkins
(Prefers Republican Party)

Troy Kelley
(Prefers Democratic Party)

Write-in

Attorney General

Bob Ferguson
(Prefers Democratic Party)

Reagan Dunn
(Prefers Republican Party)

Write-in

Commissioner of Public Lands

Peter J. Goldmark
(Prefers Democratic Party)

Clint Didier
(Prefers Republican Party)

Write-in

State: Nonpartisan Office

Superintendent of Public Instruction

Randy I. Dorn

Write-in

State: Partisan Office

Insurance Commissioner

Mike Kreidler
(Prefers Democratic Party)

John R. Adams
(Prefers Republican Party)

Write-in

Legislative: Partisan Office

**Legislative District 12
State Senator**

Linda Evans Parlette
(Prefers GOP Party)

Write-in

**Legislative District 12
State Representative Pos. 1**

Cary Condotta
(Prefers Republican Party)

Stan Morse
(Prefers Republican Party)

Write-in

**Legislative District 12
State Representative Pos. 2**

Mike Armstrong
(Prefers Republican Party)

Brad Hawkins
(Prefers Republican Party)

Write-in

County: Partisan Offices

**County Commissioner
District #1**

Ken Stanton
(Prefers Republican Party)

Carol Kavanaugh
(Prefers Republican Party)

Write-in

**County Commissioner
District #2**

Edmund (Ed) H. Daling
(Prefers Republican Party)

Dale L. Snyder
(Prefers Republican Party)

Write-in

County: Nonpartisan Office

**PUD
Commissioner 1**

Ron Skagen

Write-in

Judicial: Nonpartisan Offices

**Supreme Court
Justice Position 2**

Susan Owens

Write-in

**Supreme Court
Justice Position 8
6 Year Term - Short & Full**

Steve Gonzalez

Write-in

**Supreme Court
Justice Position 9**

Sheryl Gordon McCloud

Richard B. Sanders

Write-in

**Court of Appeals, Division 3, District
3 Judge Position 2**

Teresa C. Kuik

Write-in

**Douglas Superior Court Judge
Position 1**

John Hotchkiss

Write-in

**COULEE AREA PARK AND
RECREATION DISTRICT**

**Coulee Area Park and Recreation
District
6 Year Levy**

The Board of Commissioners of the Coulee Area Park and Recreation District adopted Resolution No. 2012-4 concerning a proposition to impose a maintenance and operation expense levy. This proposition would allow the Coulee Area Park and Recreation District to fund maintenance and operation of its facilities for the benefit of its citizens by imposing a property tax levy in the sum of fifteen (\$.15) cents per one thousand dollars of assessed valuation to be collected for six consecutive years beginning in 2013. Should this proposition be approved?

Yes

No

Hospital District #2

**Hospital District
One Year Excess Levy**

The Douglas County Hospital District No. 2 (Waterville Clinic and Ambulance) Board of Commissioners adopted Resolution #63 on July 18, 2012, containing a proposition to finance maintenance and operation. This proposition would authorize the district to levy excess taxes upon all taxable property within the district in the sum of \$65,000, requiring collection of approximately \$0.40 per \$1,000 of assessed valuation in 2013. Should this proposition be approved?

YES

NO

**EASTMONT SCHOOL DISTRICT
#206**

**Replacement of Expiring
Educational Programs and
Operations Levy**

The Board of Directors of Eastmont School District No. 206 adopted Resolution No. 2012-16, concerning a proposition for a replacement levy for education. This proposition would authorize the District to levy the following excess taxes, in place of an expiring levy, upon all taxable property within the District, for support of General Fund educational programs and operations expenses:

Collection Year	Approximate Levy Rate Per \$1000 Assessed Value	Levy Amount
2014	\$3.21	\$8,556,246
2015	\$3.30	\$8,812,933
2016	\$3.40	\$9,077,321
2017	\$3.51	\$9,349,641

all as provided in Resolution No. 2012-16. Should this proposition be approved?

LEVY YES

LEVY NO

Cemetery District

**One Year Maintenance and
Operations Excess Tax Levy**

The Douglas County Cemetery District No. 2 Board of Commissioners adopted Resolution #2012/002 on August 6, 2012, containing a proposition to finance maintenance and operations. This proposition would authorize the district to levy excess taxes upon all taxable property within the district in the amount of \$40,000, requiring collection of approximately \$0.30 per \$1,000 of assessed valuation in 2013. Should this proposition be approved?

YES

NO

Sample Ballot

1353031176