

SAMPLE BALLOT

Douglas County, Washington

Primary Election

August 17, 2010

INSTRUCTIONS

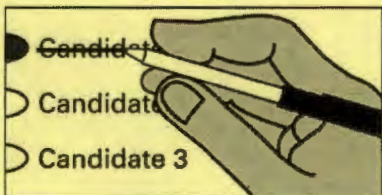
How to Vote

Use a black or blue ink pen to completely fill in the oval provided to the left of your choice.



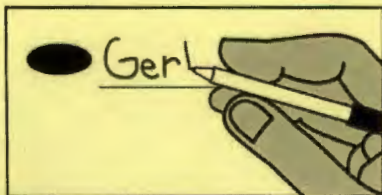
How to Correct a Mistake

Cross out the entire candidate name or ballot measure response. You then have the option of making another choice.



Optional Write-In

To add a candidate, fill in the oval to the left of the blank line and print the name clearly on the line.



Vote for only one choice for each office or ballot measure, unless the office or ballot measure specifically states otherwise. More than one vote for an office or ballot measure will be an overvote and no votes for that office or ballot measure will be counted.

READ: Each candidate for partisan office may state a political party that he or she prefers. A candidate's preference does not imply that the candidate is nominated or endorsed by the party, or that the party approves of or associates with that candidate.

FEDERAL - Partisan office

United States Senator

6 Year Term
Vote for One

- Norma D. Gruber
(Prefers Republican Party)
- Mohammad H. Said
(Prefers Centrist Party)
- Goodspaceguy
(Prefers Democratic Party)
- Mike The Mover
(Prefers Democratic Party)
- Paul Akers
(Prefers Republican Party)
- Mike Latimer
(Prefers Republican Party)
- James (Skip) Mercer
(States No Party Preference)
- Clint Didier
(Prefers Republican Party)
- Schalk Leonard
(States No Party Preference)
- Patty Murray
(Prefers Democratic Party)
- Bob Burr
(Prefers Democratic Party)
- William Edward Chovil
(Prefers Republican Party)
- Dino Rossi
(Prefers Republican Party)
- Charies Alien
(Prefers Democratic Party)
- Will Baker
(Prefers Reform Party)
-

U.S. Representative, Congressional District #4

LEGISLATIVE - Partisan office

State Representative, District #12,

Position #1

2 Year Term
Vote for One

- Cary Condotta
(Prefers Republican Party)
-

State Representative, District #12,

Position #2

2 Year Term
Vote for One

- Mike Armstrong
(Prefers Republican Party)
- Cliff Courtney
(Prefers Republican Party)
-

COUNTY - Partisan office

County Assessor

4 Year Term
Vote for One

- Jim Ruud
(Prefers Republican Party)
-

County Auditor

4 Year Term
Vote for One

- Thad L. Duvall
(Prefers Democratic Party)
-

County Clerk

4 Year Term
Vote for One

- Juanita S. Koch
(Prefers Republican Party)
-

County Commissioner, District #3

4 Year Term
Vote for One

COUNTY - Partisan office

County Prosecuting Attorney
4 Year Term
Vote for One

Steve Clem
(Prefers Republican Party)

County Sheriff
4 Year Term
Vote for One

Harvey Gjesdal
(Prefers Republican Party)

County Treasurer
4 Year Term
Vote for One

Nona Haberman
(Prefers Republican Party)

JUDICIAL - Nonpartisan office

**State Supreme Court Justice,
Position #1**
6 Year Term
Vote for One

Stan Rumbaugh
Nonpartisan

Jim Johnson
Nonpartisan

**State Supreme Court Justice,
Position #5**
6 Year Term
Vote for One

Barbara Madsen
Nonpartisan

**State Supreme Court Justice,
Position #6**
6 Year Term
Vote for One

Bryan Chushcoff
Nonpartisan

Charlie Wiggins
Nonpartisan

Richard B. Sanders
Nonpartisan

**Election of Political Party Precinct
Committee Officer**

Precinct Committee Officer is a position in each major political party. For this office only: If you consider yourself a Democrat or Republican, you may vote for a candidate of that party.

VOTE FOR ONLY ONE

For a write-in candidate, include party.

**PRECINCT COMMITTEE OFFICER -
Partisan office**

Precinct Committee Officer

2 Year Term
Vote for One
