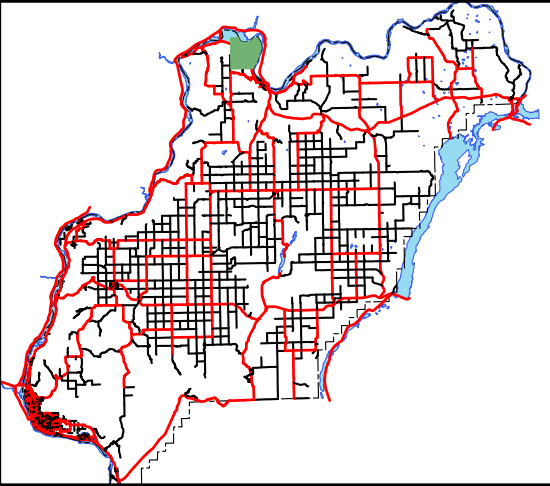


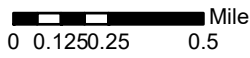
Community of Bridgeport Bar



Columbia River



Douglas County
 Transportation & Land Services
 Public Services Building
 140 - 19th St NW, Suite A
 East Wenatchee, WA 98802
 (509) 884-7173



Note: This map is intended for general information purposes only. Douglas County makes no claim as to the accuracy or current condition of the data shown on this map.

Revised: November 2019