

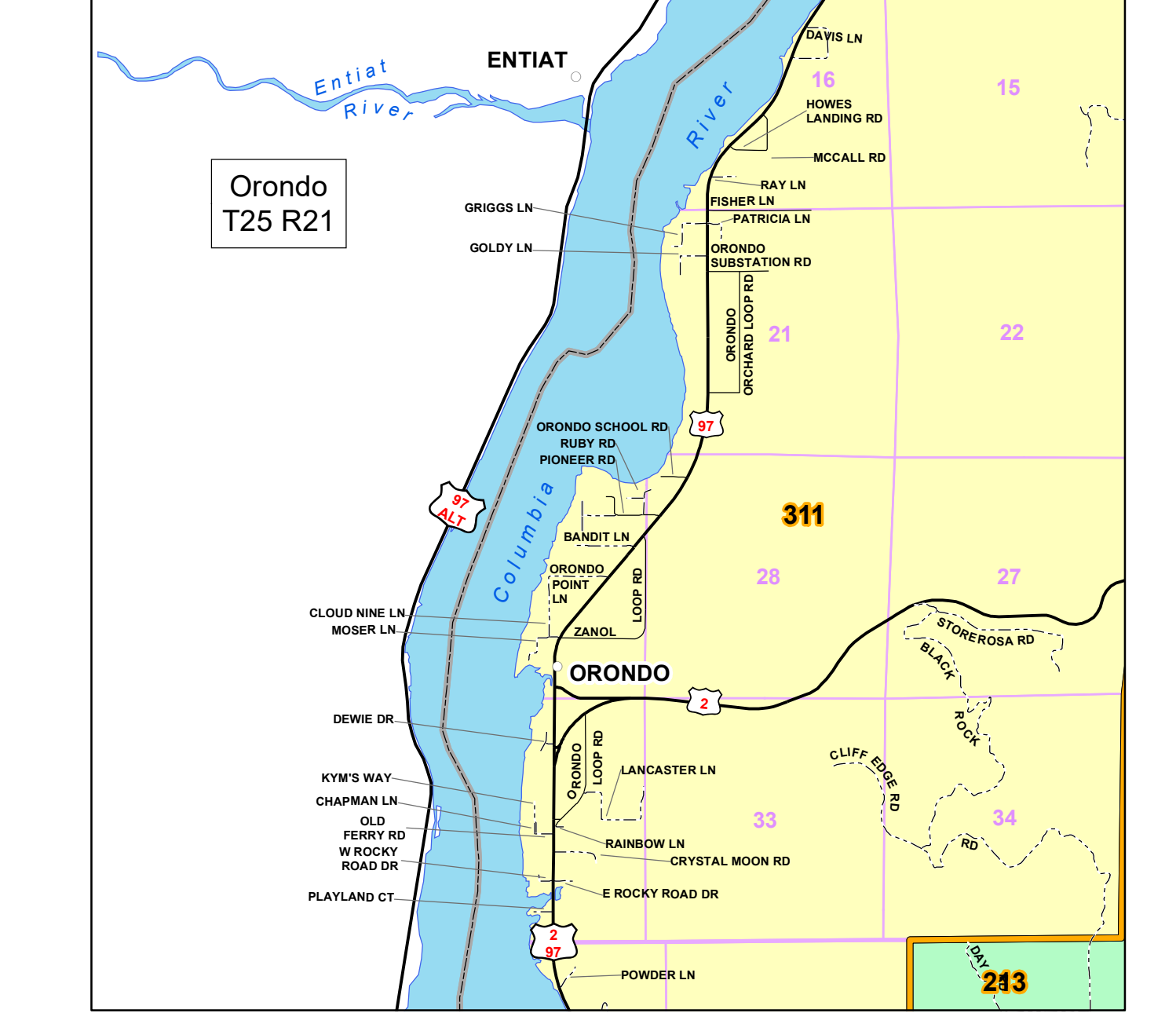
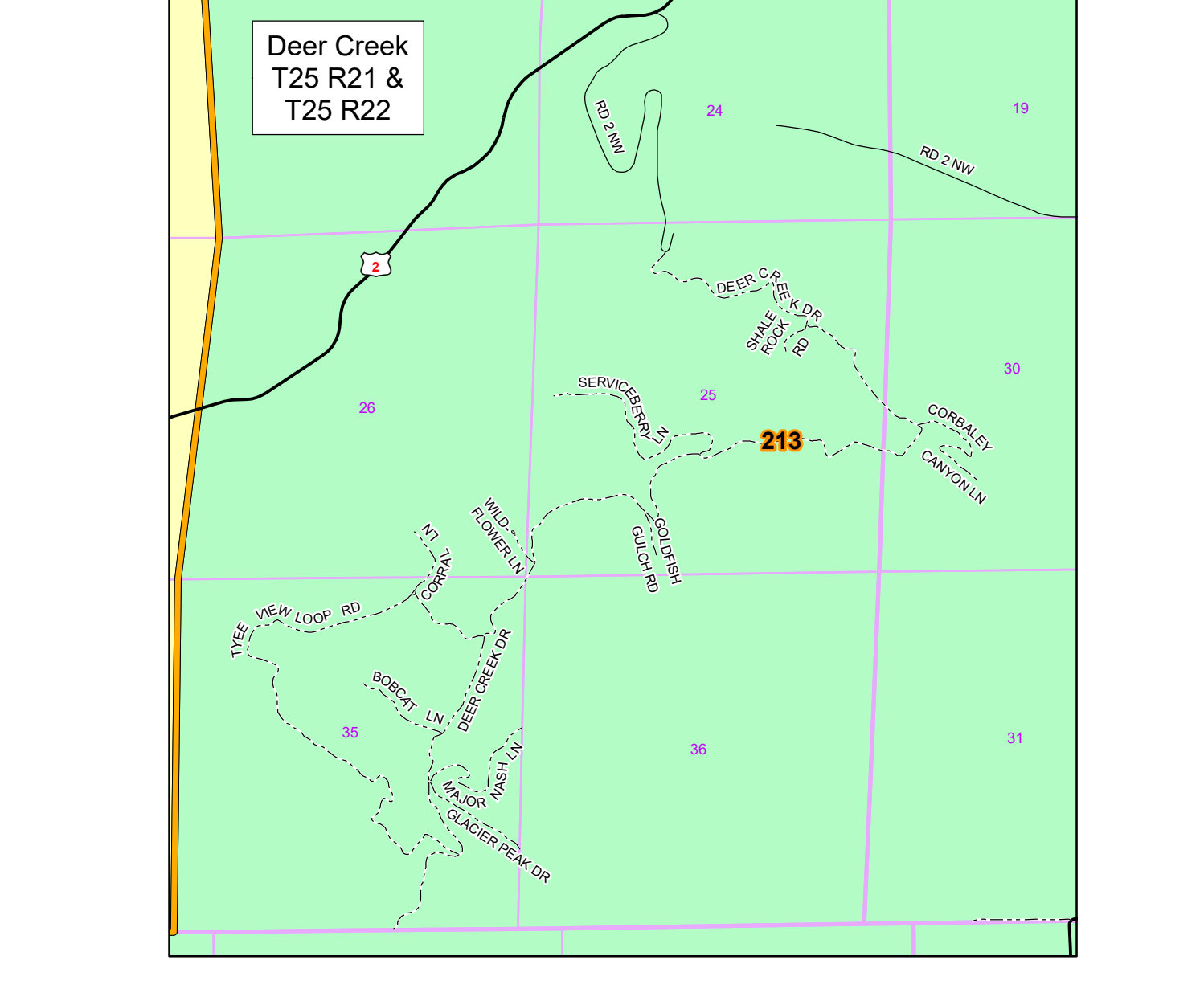
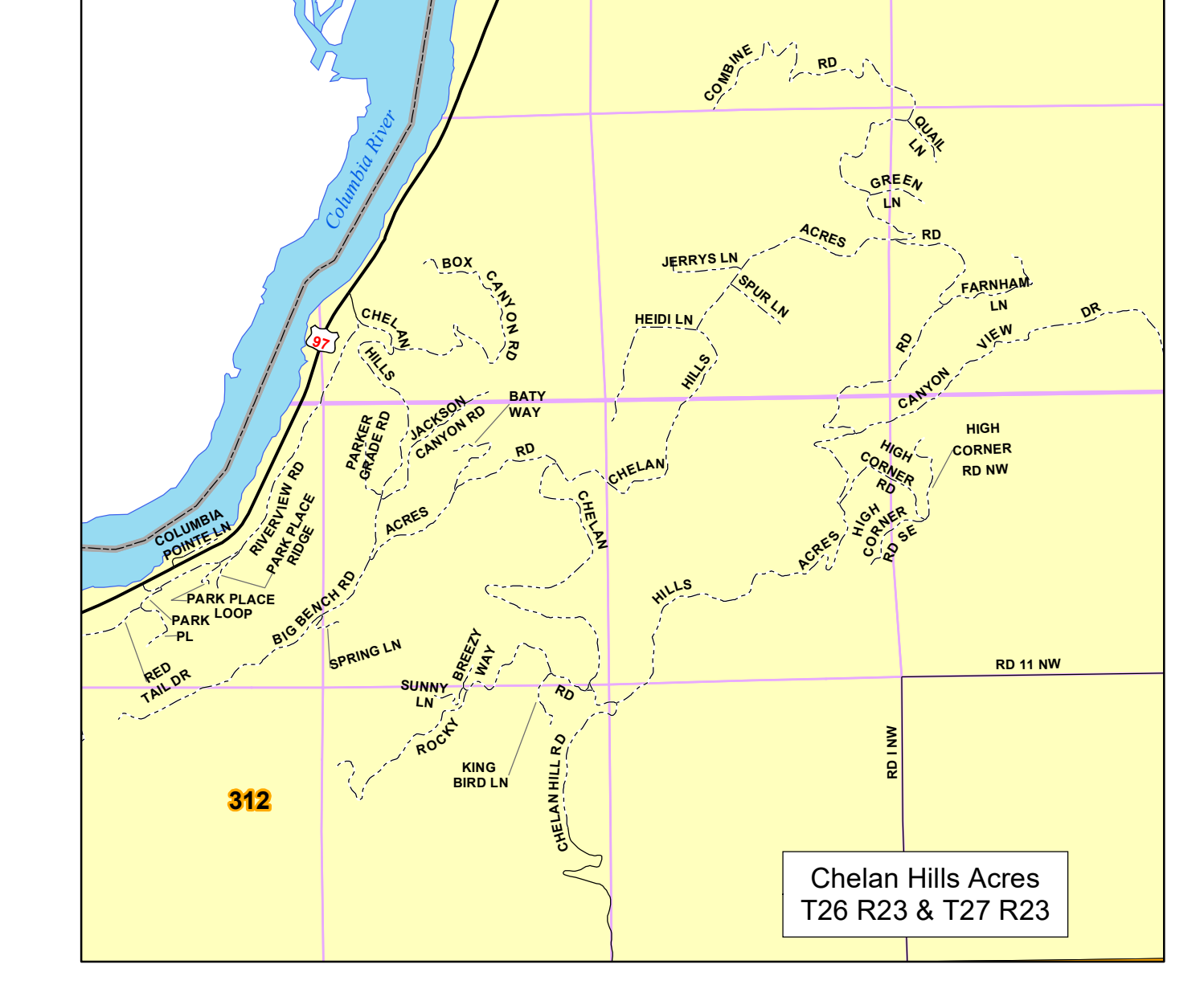
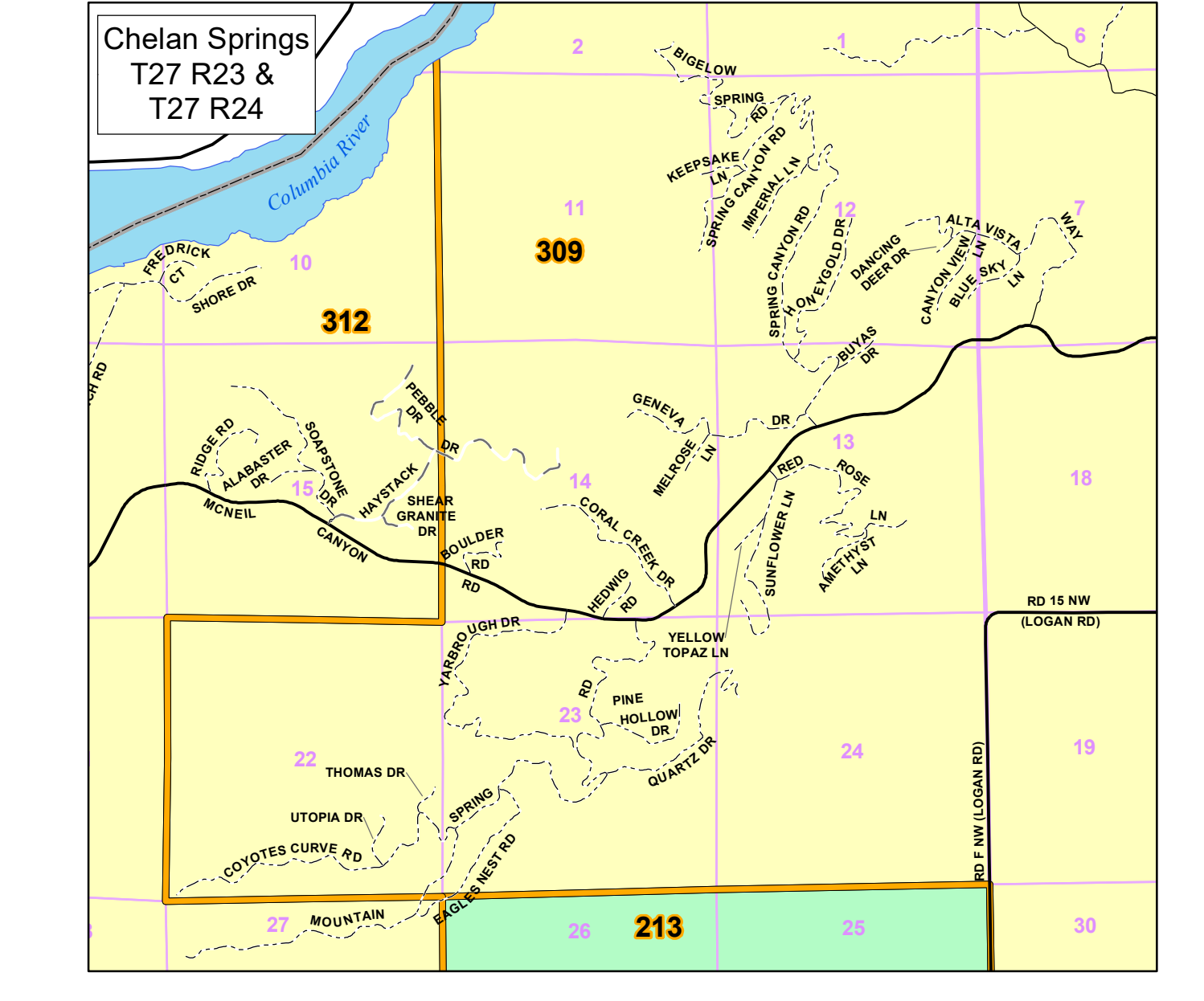
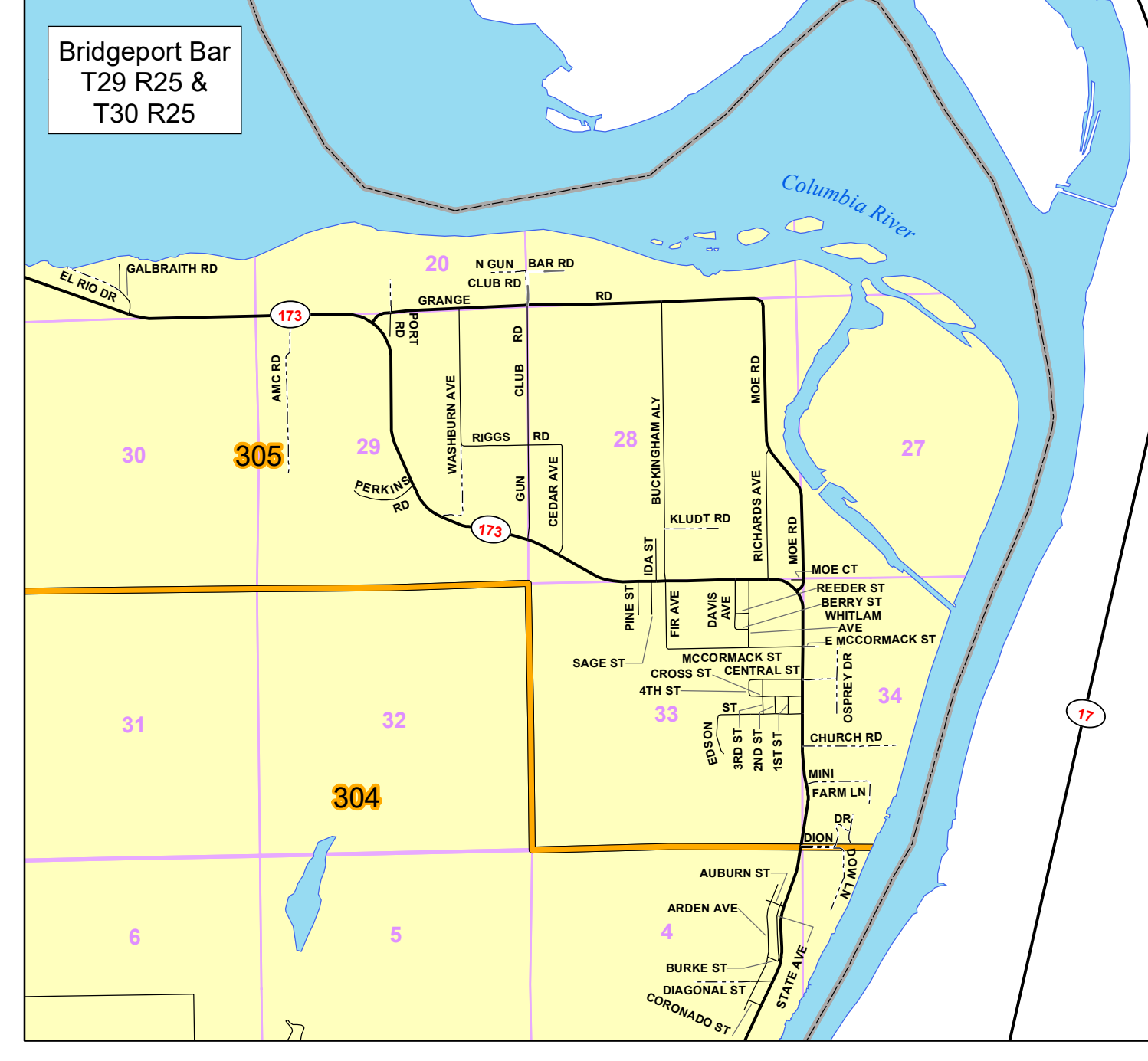
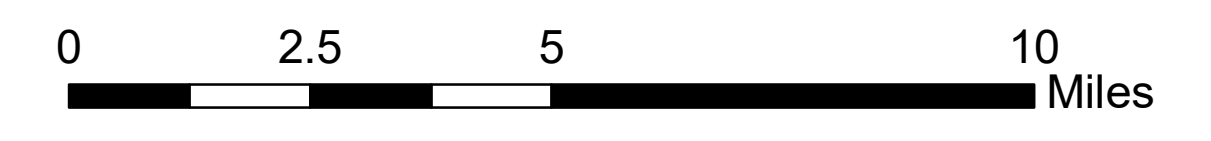
2023 Douglas County Voting Precincts & Commissioners Districts

- Voting Precinct**
- County Commissioner Districts**
  - Commissioner District #1
  - Commissioner District #2
  - Commissioner District #3
- Roads**
  - Major Public Road
  - Minor Public Road
  - Private Road
  - Proposed Road
- Local Government**
  - County
  - City or Town
- Townships & Sections**
  - Township
  - Section

Douglas County  
 Transportation & Land Services  
 Public Services Building  
 1001 W. 18th St., Ste. 800  
 East Wenatchee, WA 98802  
 (509) 864-1173

Note: This map is intended for general information purposes only. Douglas County makes no claim as to the accuracy or current condition of the data shown on this map. Map insets are not to scale.

Map revised: May 2023



ROAD NAME	LOCATION	ROAD NAME	LOCATION	ROAD NAME	LOCATION	ROAD NAME	LOCATION
1ST AVE	T26 R25	W ENTIAI	T26 R21	ORONDO POINT LN	T26 R21	RD 1 NW	T26 R24, T27 R24
1ST ST	T26 R25	ENTIAI PL	T26 R21	ORONDO SCHOOL RD	T26 R21	RD 2 NEX	T26 R24, T27 R24
2ND AVE	T26 R25	FARVIEW RD	T26 R21	ORONDO SUBSTATION	T26 R21	RD 3 NEX	T26 R24, T27 R24
2ND ST	T26 R25	FALCON RIDGE RD	T24 R21	OSPREY DR	T26 R25	RD 4 SE	T26 R24, T27 R24
3RD ST	T26 R25	FARMER S RD	T24 R24	PANTHER RD	T26 R23	RD 5 SE	T26 R24, T27 R24
4TH ST	T26 R25	FARMHALL LN	T24 R22	PAULS VALLEY RD	T26 R23	RD 6 SE	T26 R24, T27 R24
ABBEY RD	T26 R21	FERRER RD	T24 R22, T24 R23	PARK PL	T26 R23	RD 7 NW	T26 R24, T27 R24
ADAMS RD	T26 R22	FERRER RD	T26 R25	PARK PLACE LOOP	T26 R23	RD 8 SE	T26 R24, T27 R24
AIRPORT RD	T26 R22	FR AVE	T26 R25	PARK PLACE LOOP	T26 R23	RD 9 SE	T26 R24, T27 R24
AIRPORT WAY	T27 R25	FR RD	T24 R21	PARKER GRADE RD	T26 R23	RD 10 NE	T26 R24, T27 R24
ALABASTER DR	T27 R23	FISHER LN	T26 R21	PARKS RD	T26 R23	RD 11 NE	T26 R24, T27 R24
ALAMEDA FLATS RD	T27 R23	FISHER RD	T26 R21	PASTURE RD	T26 R24	RD 12 NE	T26 R24, T27 R24
ALCAZAR LN	T26 R21	FIVE MILE RD	T26 R24, T26 R25	PATEROS FERRY RD	T26 R24	RD 13 NW	T26 R24, T27 R24
ALCANTARA CUTOFF RD	T24 R23	FOURMILE RD	T26 R24, T27 R24	PATROL LN	T26 R21	RD 14 NE	T26 R24, T27 R24
ALSTOWN OIL	T24 R23	FRANLEY	T24 R22	PEACOCK PINE LN	T26 R23	RD 15 NW	T26 R24, T27 R24
ALSTOWN RD W	T24 R22	FREDRICK CT	T27 R23	PEACH RD	T26 R24	RD 16 NW	T26 R24, T27 R24
ALTA VISTA WAY	T27 R23	FREEDRICK CT	T27 R23	PEARL HILL CLO	T26 R23	RD 17 NE	T26 R24, T27 R24
ALTRIA LN	T24 R27	GALBATH RD	T26 R25	PEARL HILL RD	T26 R23	RD 18 NE	T26 R24, T27 R24
AMC RD	T26 R25	W GALLAGHER RD	T26 R24	PEARL HILL RD	T26 R23	RD 19 NE	T26 R24, T27 R24
AMBERLYN LN	T26 R24	GARDNER RD	T26 R23	PEARL HILL RD	T26 R23	RD 20 NE	T26 R24, T27 R24
ANDREWS ST	T26 R24	GENEVA DR	T26 R23	PEARL HILL RD	T26 R23	RD 21 NE	T26 R24, T27 R24
ANDREW DR NE	T21 R22	GIANTS TRAIL RD	T26 R22	PEARL HILL RD	T26 R23	RD 22 NE	T26 R24, T27 R24
APPLE DR	T21 R22	GIANTS TRAIL RD	T26 R22	PEARL HILL RD	T26 R23	RD 23 NE	T26 R24, T27 R24
APPLE LN	T21 R22	GIANTS TRAIL RD	T26 R22	PEARL HILL RD	T26 R23	RD 24 NE	T26 R24, T27 R24
ARMSTRONG RD	T26 R25	GOAT RD	T26 R24	PEARL HILL RD	T26 R23	RD 25 NE	T26 R24, T27 R24
ARMSTRONGS RD	T26 R25	GOAT RD	T26 R24	PEARL HILL RD	T26 R23	RD 26 NE	T26 R24, T27 R24
ARMSTRONGS RD	T26 R25	GOAT RD	T26 R24	PEARL HILL RD	T26 R23	RD 27 NE	T26 R24, T27 R24
ARMSTRONGS RD	T26 R25	GOAT RD	T26 R24	PEARL HILL RD	T26 R23	RD 28 NE	T26 R24, T27 R24
ARMSTRONGS RD	T26 R25	GOAT RD	T26 R24	PEARL HILL RD	T26 R23	RD 29 NE	T26 R24, T27 R24
ARMSTRONGS RD	T26 R25	GOAT RD	T26 R24	PEARL HILL RD	T26 R23	RD 30 NE	T26 R24, T27 R24
ARMSTRONGS RD	T26 R25	GOAT RD	T26 R24	PEARL HILL RD	T26 R23	RD 31 NE	T26 R24, T27 R24
ARMSTRONGS RD	T26 R25	GOAT RD	T26 R24	PEARL HILL RD	T26 R23	RD 32 NE	T26 R24, T27 R24
ARMSTRONGS RD	T26 R25	GOAT RD	T26 R24	PEARL HILL RD	T26 R23	RD 33 NE	T26 R24, T27 R24
ARMSTRONGS RD	T26 R25	GOAT RD	T26 R24	PEARL HILL RD	T26 R23	RD 34 NE	T26 R24, T27 R24
ARMSTRONGS RD	T26 R25	GOAT RD	T26 R24	PEARL HILL RD	T26 R23	RD 35 NE	T26 R24, T27 R24
ARMSTRONGS RD	T26 R25	GOAT RD	T26 R24	PEARL HILL RD	T26 R23	RD 36 NE	T26 R24, T27 R24
ARMSTRONGS RD	T26 R25	GOAT RD	T26 R24	PEARL HILL RD	T26 R23	RD 37 NE	T26 R24, T27 R24
ARMSTRONGS RD	T26 R25	GOAT RD	T26 R24	PEARL HILL RD	T26 R23	RD 38 NE	T26 R24, T27 R24
ARMSTRONGS RD	T26 R25	GOAT RD	T26 R24	PEARL HILL RD	T26 R23	RD 39 NE	T26 R24, T27 R24
ARMSTRONGS RD	T26 R25	GOAT RD	T26 R24	PEARL HILL RD	T26 R23	RD 40 NE	T26 R24, T27 R24
ARMSTRONGS RD	T26 R25	GOAT RD	T26 R24	PEARL HILL RD	T26 R23	RD 41 NE	T26 R24, T27 R24
ARMSTRONGS RD	T26 R25	GOAT RD	T26 R24	PEARL HILL RD	T26 R23	RD 42 NE	T26 R24, T27 R24
ARMSTRONGS RD	T26 R25	GOAT RD	T26 R24	PEARL HILL RD	T26 R23	RD 43 NE	T26 R24, T27 R24
ARMSTRONGS RD	T26 R25	GOAT RD	T26 R24	PEARL HILL RD	T26 R23	RD 44 NE	T26 R24, T27 R24
ARMSTRONGS RD	T26 R25	GOAT RD	T26 R24	PEARL HILL RD	T26 R23	RD 45 NE	T26 R24, T27 R24
ARMSTRONGS RD	T26 R25	GOAT RD	T26 R24	PEARL HILL RD	T26 R23	RD 46 NE	T26 R24, T27 R24
ARMSTRONGS RD	T26 R25	GOAT RD	T26 R24	PEARL HILL RD	T26 R23	RD 47 NE	T26 R24, T27 R24
ARMSTRONGS RD	T26 R25	GOAT RD	T26 R24	PEARL HILL RD	T26 R23	RD 48 NE	T26 R24, T27 R24
ARMSTRONGS RD	T26 R25	GOAT RD	T26 R24	PEARL HILL RD	T26 R23	RD 49 NE	T26 R24, T27 R24
ARMSTRONGS RD	T26 R25	GOAT RD	T26 R24	PEARL HILL RD	T26 R23	RD 50 NE	T26 R24, T27 R24
ARMSTRONGS RD	T26 R25	GOAT RD	T26 R24	PEARL HILL RD	T26 R23	RD 51 NE	T26 R24, T27 R24
ARMSTRONGS RD	T26 R25	GOAT RD	T26 R24	PEARL HILL RD	T26 R23	RD 52 NE	T26 R24, T27 R24
ARMSTRONGS RD	T26 R25	GOAT RD	T26 R24	PEARL HILL RD	T26 R23	RD 53 NE	T26 R24, T27 R24
ARMSTRONGS RD	T26 R25	GOAT RD	T26 R24	PEARL HILL RD	T26 R23	RD 54 NE	T26 R24, T27 R24
ARMSTRONGS RD	T26 R25	GOAT RD	T26 R24	PEARL HILL RD	T26 R23	RD 55 NE	T26 R24, T27 R24
ARMSTRONGS RD	T26 R25	GOAT RD	T26 R24	PEARL HILL RD	T26 R23	RD 56 NE	T26 R24, T27 R24
ARMSTRONGS RD	T26 R25	GOAT RD	T26 R24	PEARL HILL RD	T26 R23	RD 57 NE	T26 R24, T27 R24
ARMSTRONGS RD	T26 R25	GOAT RD	T26 R24	PEARL HILL RD	T26 R23	RD 58 NE	T26 R24, T27 R24
ARMSTRONGS RD	T26 R25	GOAT RD	T26 R24	PEARL HILL RD	T26 R23	RD 59 NE	T26 R24, T27 R24
ARMSTRONGS RD	T26 R25	GOAT RD	T26 R24	PEARL HILL RD	T26 R23	RD 60 NE	T26 R24, T27 R24
ARMSTRONGS RD	T26 R25	GOAT RD	T26 R24	PEARL HILL RD	T26 R23	RD 61 NE	T26 R24, T27 R24
ARMSTRONGS RD	T26 R25	GOAT RD	T26 R24	PEARL HILL RD	T26 R23	RD 62 NE	T26 R24, T27 R24
ARMSTRONGS RD	T26 R25	GOAT RD	T26 R24	PEARL HILL RD	T26 R23	RD 63 NE	T26 R24, T27 R24
ARMSTRONGS RD	T26 R25	GOAT RD	T26 R24	PEARL HILL RD	T26 R23	RD 64 NE	T26 R24, T27 R24
ARMSTRONGS RD	T26 R25	GOAT RD	T26 R24	PEARL HILL RD	T26 R23	RD 65 NE	T26 R24, T27 R24
ARMSTRONGS RD	T26 R25	GOAT RD	T26 R24	PEARL HILL RD	T26 R23	RD 66 NE	T26 R24, T27 R24
ARMSTRONGS RD	T26 R25	GOAT RD	T26 R24	PEARL HILL RD	T26 R23	RD 67 NE	T26 R24, T27 R24
ARMSTRONGS RD	T26 R25	GOAT RD	T26 R24	PEARL HILL RD	T26 R23	RD 68 NE	T26 R24, T27 R24
ARMSTRONGS RD	T26 R25	GOAT RD	T26 R24	PEARL HILL RD	T26 R23	RD 69 NE	T26 R24, T27 R24
ARMSTRONGS RD	T26 R25	GOAT RD	T26 R24	PEARL HILL RD	T26 R23	RD 70 NE	T26 R24, T27 R24
ARMSTRONGS RD	T26 R25	GOAT RD	T26 R24	PEARL HILL RD	T26 R23	RD 71 NE	T26 R24, T27 R24
ARMSTRONGS RD	T26 R25	GOAT RD	T26 R24	PEARL HILL RD	T26 R23	RD 72 NE	T26 R24, T27 R24
ARMSTRONGS RD	T26 R25	GOAT RD	T26 R24	PEARL HILL RD	T26 R23	RD 73 NE	T26 R24, T27 R24
ARMSTRONGS RD	T26 R25	GOAT RD	T26 R24	PEARL HILL RD	T26 R23	RD 74 NE	T26 R24, T27 R24
ARMSTRONGS RD	T26 R25	GOAT RD	T26 R24	PEARL HILL RD	T26 R23	RD 75 NE	T26 R24, T27 R24
ARMSTRONGS RD	T26 R25	GOAT RD	T26 R24	PEARL HILL RD	T26 R23	RD 76 NE	T26 R24, T27 R24
ARMSTRONGS RD	T26 R25	GOAT RD	T26 R24	PEARL HILL RD	T26 R23	RD 77 NE	T26 R24, T27 R24
ARMSTRONGS RD	T26 R25	GOAT RD	T26 R24	PEARL HILL RD	T26 R23	RD 78 NE	T26 R24, T27 R24
ARMSTRONGS RD	T26 R25	GOAT RD	T26 R24	PEARL HILL RD	T26 R23	RD 79 NE	T26 R24, T27 R24
ARMSTRONGS RD	T26 R25	GOAT RD	T26 R24	PEARL HILL RD	T26 R23	RD 80 NE	T26 R24, T27 R24
ARMSTRONGS RD	T26 R25	GOAT RD	T26 R24	PEARL HILL RD	T26 R23	RD 81 NE	T26 R24, T27 R24
ARMSTRONGS RD	T26 R25	GOAT RD	T26 R24	PEARL HILL RD	T26 R23	RD 82 NE	T26 R24, T27 R24
ARMSTRONGS RD	T26 R25	GOAT RD	T26 R24	PEARL HILL RD	T26 R23	RD 83 NE	T26 R24, T27 R24
ARMSTRONGS RD	T26 R25	GOAT RD	T26 R24	PEARL HILL RD	T26 R23	RD 84 NE	T26 R24, T27 R24
ARMSTRONGS RD	T26 R25	GOAT RD	T26 R24	PEARL HILL RD	T26 R23	RD 85 NE	T26 R24, T27 R24
ARMSTRONGS RD	T26 R25	GOAT RD	T26 R24	PEARL HILL RD	T26 R23	RD 86 NE	T26 R24, T27 R24
ARMSTRONGS RD	T26 R25	GOAT RD	T26 R24	PEARL HILL RD	T26 R23	RD 87 NE	T26 R24, T27 R24
ARMSTRONGS RD	T26 R25	GOAT RD	T26 R24	PEARL HILL RD	T26 R23	RD 88 NE	T26 R24, T27 R24
ARMSTRONGS RD	T26 R25	GOAT RD	T26 R24	PEARL HILL RD	T26 R23	RD 89 NE	T26 R24, T27 R24
ARMSTRONGS RD	T26 R25	GOAT RD	T26 R24	PEARL HILL RD	T26 R23	RD 90 NE	T26 R24, T27 R24
ARMSTRONGS RD	T26 R25	GOAT RD	T26 R24	PEARL HILL RD	T26 R23	RD 91 NE	T26 R24, T27 R24
ARMSTRONGS RD	T26 R25	GOAT RD	T26 R24	PEARL HILL RD	T26 R23	RD 92 NE	T26 R24, T27 R24
ARMSTRONGS RD	T26 R25	GOAT RD	T26 R24	PEARL HILL RD	T26 R23	RD 93 NE	T26 R24, T27 R24
ARMSTRONGS RD	T26 R25	GOAT RD	T26 R24	PEARL HILL RD	T26 R23	RD 94 NE	T26 R24, T27 R24
ARMSTRONGS RD	T26 R25	GOAT RD	T26 R24	PEARL HILL RD	T26 R23	RD 95 NE	T26 R24, T27 R24
ARMSTRONGS RD	T26 R25	GOAT RD	T26 R24	PEARL HILL RD	T26 R23	RD 96 NE	T26 R24, T27 R24
ARMSTRONGS RD	T26 R25	GOAT RD	T26 R24	PEARL HILL RD	T26 R23	RD 97 NE	T26 R24, T27 R24
ARMSTRONGS RD	T26 R25	GOAT RD	T26 R24	PEARL HILL RD	T26 R23	RD 98 NE	T26 R24, T27 R24
ARMSTRONGS RD	T26 R25	GOAT RD	T26 R24	PEARL HILL RD	T26 R23	RD 99 NE	T26 R24, T27 R24
ARMSTRONGS RD	T26 R25	GOAT RD	T26 R24	PEARL HILL RD	T26 R23	RD 100 NE	T26 R24, T27 R24