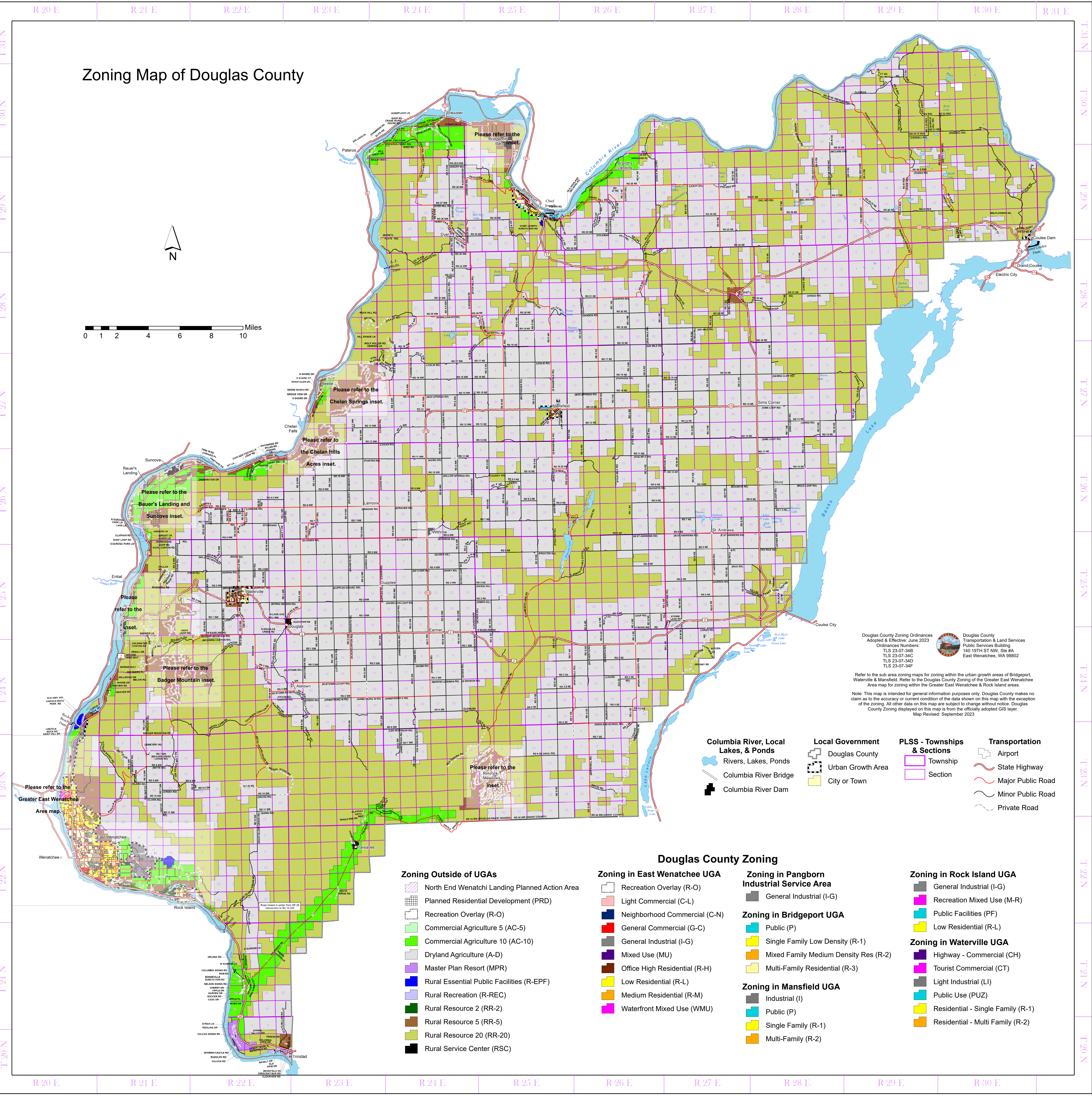
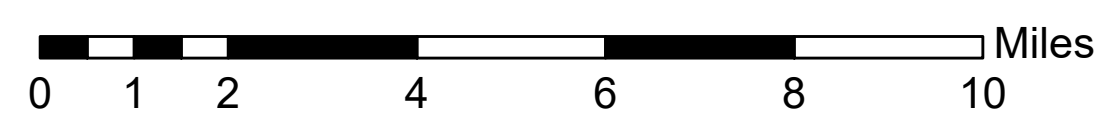


Zoning Map of Douglas County



Douglas County Zoning Ordinances
 Adopted & Effective: June 2023
 Ordinance Numbers:
 TLS 23-07-34B
 TLS 23-07-34C
 TLS 23-07-34D
 TLS 23-07-34F

Douglas County
 Transportation & Land Services
 Public Services Building
 140 19TH ST NW, Ste 8A
 East Wenatchee, WA 98802

Refer to the sub area zoning maps for zoning within the urban growth areas of Bridgeport, Waterville & Mansfield. Refer to the Douglas County Zoning of the Greater East Wenatchee Area map for zoning within the Greater East Wenatchee & Rock Island areas.

Note: This map is intended for general information purposes only. Douglas County makes no claim as to the accuracy or current condition of the data shown on this map with the exception of the zoning. All other data on this map are subject to change without notice. Douglas County Zoning displayed on this map is from the officially adopted GIS layer.
 Map Revised: September 2023

- Columbia River, Local Lakes, & Ponds**
 - Rivers, Lakes, Ponds
 - Columbia River Bridge
 - Columbia River Dam
- Local Government**
 - Douglas County
 - Urban Growth Area
 - City or Town
- PLSS - Townships & Sections**
 - Township
 - Section
- Transportation**
 - Airport
 - State Highway
 - Major Public Road
 - Minor Public Road
 - Private Road

Zoning Outside of UGAs

- North End Wenatchee Landing Planned Action Area
- Planned Residential Development (PRD)
- Recreation Overlay (R-O)
- Commercial Agriculture 5 (AC-5)
- Commercial Agriculture 10 (AC-10)
- Dryland Agriculture (A-D)
- Master Plan Resort (MPR)
- Rural Essential Public Facilities (R-EPF)
- Rural Recreation (R-REC)
- Rural Resource 2 (RR-2)
- Rural Resource 5 (RR-5)
- Rural Resource 20 (RR-20)
- Rural Service Center (RSC)

Zoning in East Wenatchee UGA

- Recreation Overlay (R-O)
- Light Commercial (C-L)
- Neighborhood Commercial (C-N)
- General Commercial (G-C)
- General Industrial (I-G)
- Mixed Use (MU)
- Office High Residential (R-H)
- Low Residential (R-L)
- Medium Residential (R-M)
- Waterfront Mixed Use (WМУ)

Zoning in Pangborn Industrial Service Area

- General Industrial (I-G)

Zoning in Bridgeport UGA

- Public (P)
- Single Family Low Density (R-1)
- Mixed Family Medium Density Res (R-2)
- Multi-Family Residential (R-3)

Zoning in Mansfield UGA

- Industrial (I)
- Public (P)
- Single Family (R-1)
- Multi-Family (R-2)

Zoning in Rock Island UGA

- General Industrial (I-G)
- Recreation Mixed Use (M-R)
- Public Facilities (PF)
- Low Residential (R-L)

Zoning in Waterville UGA

- Highway - Commercial (CH)
- Tourist Commercial (CT)
- Light Industrial (LI)
- Public Use (PUZ)
- Residential - Single Family (R-1)
- Residential - Multi Family (R-2)