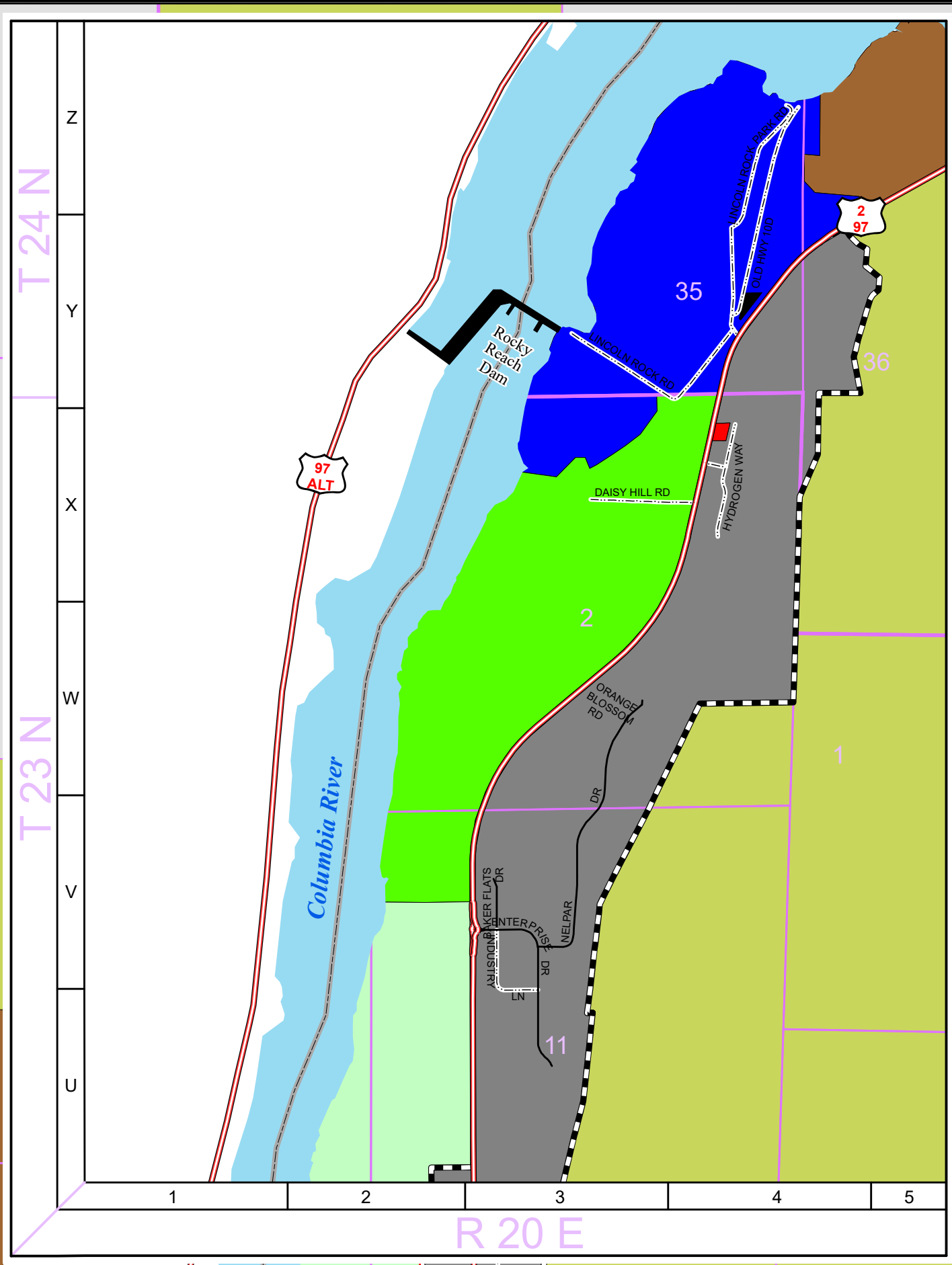
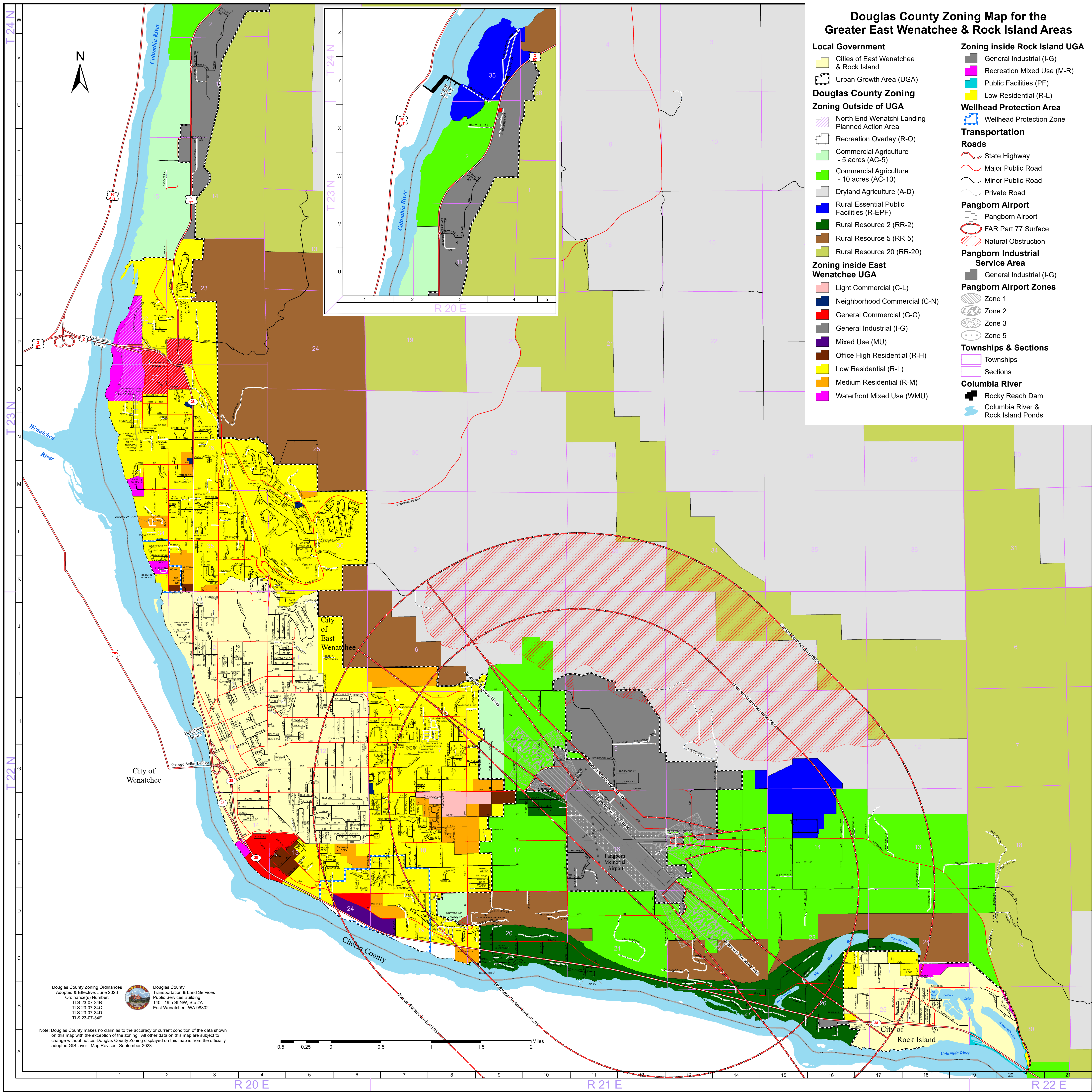
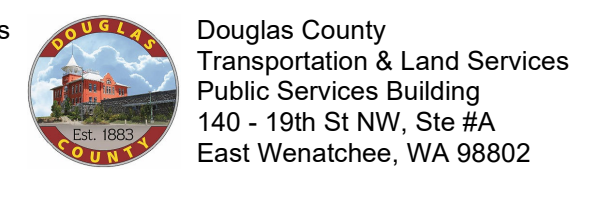


Douglas County Zoning Map for the Greater East Wenatchee & Rock Island Areas

- Local Government**
 - Cities of East Wenatchee & Rock Island
 - Urban Growth Area (UGA)
- Douglas County Zoning**
- Zoning Outside of UGA**
 - North End Wenatchee Landing Planned Action Area
 - Recreation Overlay (R-O)
 - Commercial Agriculture - 5 acres (AC-5)
 - Commercial Agriculture - 10 acres (AC-10)
 - Dryland Agriculture (A-D)
 - Rural Essential Public Facilities (R-EPF)
 - Rural Resource 2 (RR-2)
 - Rural Resource 5 (RR-5)
 - Rural Resource 20 (RR-20)
- Zoning inside East Wenatchee UGA**
 - Light Commercial (C-L)
 - Neighborhood Commercial (C-N)
 - General Commercial (G-C)
 - General Industrial (I-G)
 - Mixed Use (MU)
 - Office High Residential (R-H)
 - Low Residential (R-L)
 - Medium Residential (R-M)
 - Waterfront Mixed Use (WMU)
- Zoning inside Rock Island UGA**
 - General Industrial (I-G)
 - Recreation Mixed Use (M-R)
 - Public Facilities (PF)
 - Low Residential (R-L)
- Wellhead Protection Area**
 - Wellhead Protection Zone
- Transportation**
- Roads**
 - State Highway
 - Major Public Road
 - Minor Public Road
 - Private Road
- Pangborn Airport**
 - Pangborn Airport
 - FAR Part 77 Surface
 - Natural Obstruction
- Pangborn Industrial Service Area**
 - General Industrial (I-G)
- Pangborn Airport Zones**
 - Zone 1
 - Zone 2
 - Zone 3
 - Zone 5
- Townships & Sections**
 - Townships
 - Sections
- Columbia River**
 - Rocky Reach Dam
 - Columbia River & Rock Island Ponds



Douglas County Zoning Ordinances
 Adopted & Effective: June 2023
 Ordinance(s) Number:
 TLS 23-07-34B
 TLS 23-07-34C
 TLS 23-07-34D
 TLS 23-07-34F



Note: Douglas County makes no claim as to the accuracy or current condition of the data shown on this map with the exception of the zoning. All other data on this map are subject to change without notice. Douglas County Zoning displayed on this map is from the officially adopted GIS layer. Map Revised: September 2023

