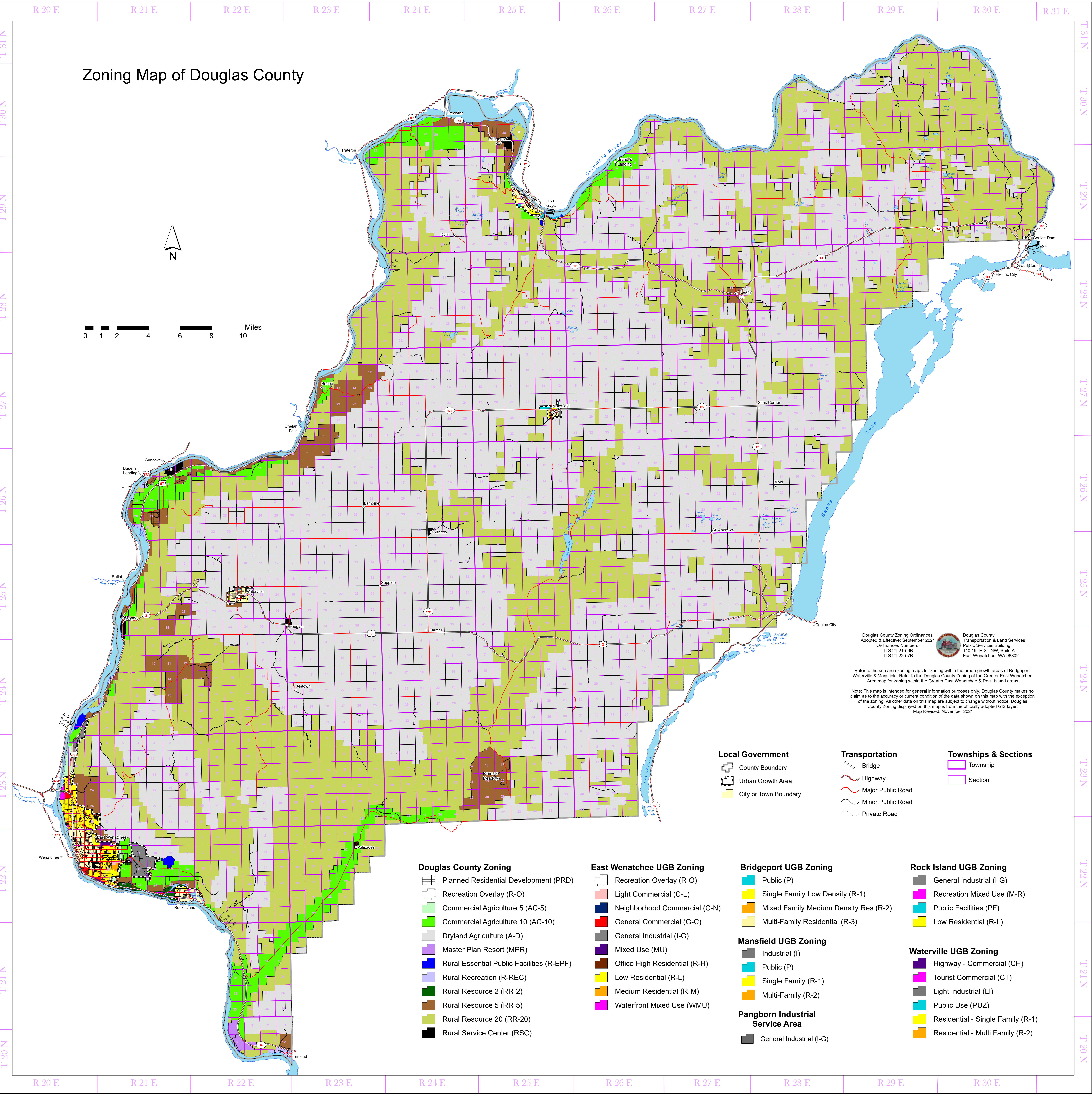
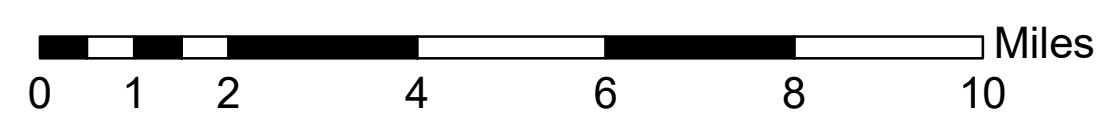


Zoning Map of Douglas County



Douglas County Zoning Ordinances
 Adopted & Effective: September 2021
 Ordinance Numbers:
 TLS 21-21-66B
 TLS 21-22-57B

Douglas County
 Transportation & Land Services
 Public Services Building
 140 10TH ST NW, Suite A
 East Wenatchee, WA 98802

Refer to the sub area zoning maps for zoning within the urban growth areas of Bridgeport, Waterville & Mansfield. Refer to the Douglas County Zoning of the Greater East Wenatchee Area map for zoning within the Greater East Wenatchee & Rock Island areas.

Note: This map is intended for general information purposes only. Douglas County makes no claim as to the accuracy or current condition of the data shown on this map with the exception of the zoning. All other data on this map are subject to change without notice. Douglas County Zoning displayed on this map is from the officially adopted GIS layer.
 Map Revised: November 2021

- | | | |
|--|--|--|
| Local Government
County Boundary
Urban Growth Area
City or Town Boundary | Transportation
Bridge
Highway
Major Public Road
Minor Public Road
Private Road | Townships & Sections
Township
Section |
|--|--|--|

- | | | | |
|--|---|---|--|
| Douglas County Zoning
Planned Residential Development (PRD)
Recreation Overlay (R-O)
Commercial Agriculture 5 (AC-5)
Commercial Agriculture 10 (AC-10)
Dryland Agriculture (A-D)
Master Plan Resort (MPR)
Rural Essential Public Facilities (R-EPF)
Rural Recreation (R-REC)
Rural Resource 2 (RR-2)
Rural Resource 5 (RR-5)
Rural Resource 20 (RR-20)
Rural Service Center (RSC) | East Wenatchee UGB Zoning
Recreation Overlay (R-O)
Light Commercial (C-L)
Neighborhood Commercial (C-N)
General Commercial (G-C)
General Industrial (I-G)
Mixed Use (MU)
Office High Residential (R-H)
Low Residential (R-L)
Medium Residential (R-M)
Waterfront Mixed Use (WMU) | Bridgeport UGB Zoning
Public (P)
Single Family Low Density (R-1)
Mixed Family Medium Density Res (R-2)
Multi-Family Residential (R-3)
Mansfield UGB Zoning
Industrial (I)
Public (P)
Single Family (R-1)
Multi-Family (R-2)
Pangborn Industrial Service Area
General Industrial (I-G) | Rock Island UGB Zoning
General Industrial (I-G)
Recreation Mixed Use (M-R)
Public Facilities (PF)
Low Residential (R-L)
Waterville UGB Zoning
Highway - Commercial (CH)
Tourist Commercial (CT)
Light Industrial (LI)
Public Use (PUZ)
Residential - Single Family (R-1)
Residential - Multi Family (R-2) |
|--|---|---|--|